

1 Using the P3K Wizard

P3K Wizard is a Kramer software program associated with Protocol 3000 that is used for the following:

- Upgrading the machine firmware (see section [1.1](#))
- Accessing and changing device parameters (see section [1.2](#)).

The P3K program can be downloaded from the Kramer Web site at <http://www.kramerelectronics.com>

1.1 Updating the Product Firmware

The **Product** uses a microcontroller that runs firmware located in FLASH memory. The latest version of firmware can be downloaded from the Kramer Web site and updated in minutes using the PK3 Wizard and the following procedures.

To update the **Product** firmware:

1. Download the firmware file from the Internet (see section [1.1.1](#))
2. Connect a PC to the **Product** (see section [1.1.2](#))
3. Update the firmware using the P3K Wizard (see section [1.1.3](#))

1.1.1 Downloading the Firmware

To download the latest firmware file¹ from the Internet:

1. Go to the Kramer Web site at www.kramerelectronics.com.
2. Navigate to SUPPORT / Software Firmware Updates.
3. Click on the link of the firmware that applies to your product. Download it and save it to disk.
4. Extract the file to a folder (for example, C:\Program Files\Kramer Flash).

1.1.2 Connecting a PC to the Product

To connect a PC to the **Product**, make any one of the following connections:

- Connect a serial cable from an RS-232 9-pin D-sub rear panel port on the PC to the **Product**
- Connect a USB cable from a USB port on the PC to the USB port on the **Product**
- Connect an RJ-45 Ethernet cable from the Ethernet port on the PC

¹ The files indicated in this section are given as an example only. File names are liable to change from time to time

to the Ethernet port on the **Product**

1.1.3 Updating the Firmware

To update the firmware, perform the following steps:

1. Open the Kramer P3K Wizard¹ by double-clicking the desktop icon **P3K Wizard**.

The *P3K Wizard* screen appears²:

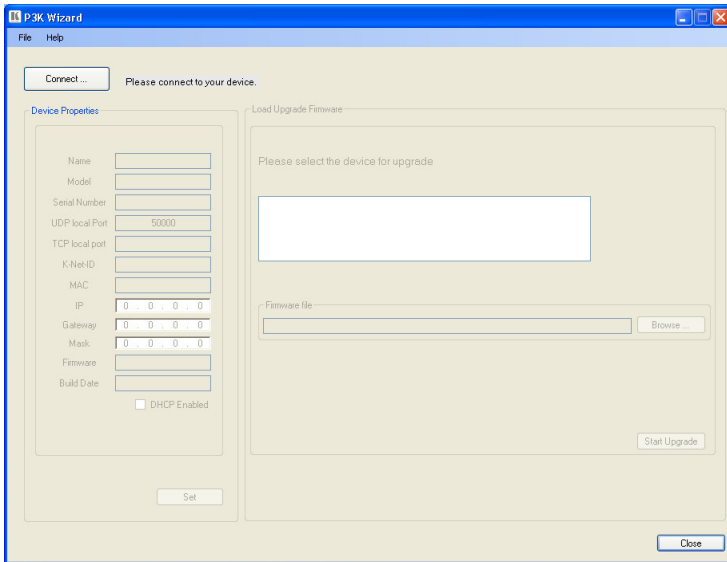


Figure 1: P3K Wizard Screen

2. Click the **Connect** button.
The *Connect Window* appears.

¹ You can download and install the latest version of the P3K Wizard from www.kramerelectronics.com.

² The screens appearing in this manual are examples of the process. The actual screens may differ in their content.

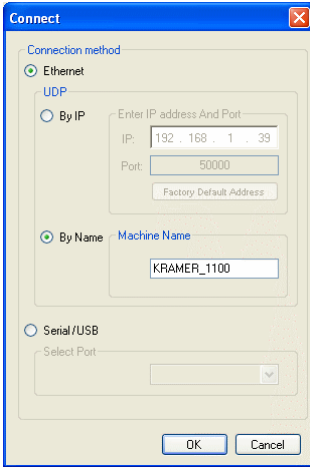


Figure 2: Connect Ethernet by Name

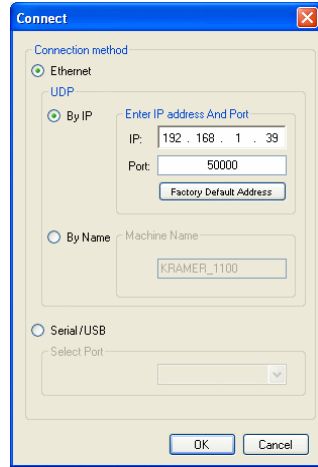


Figure 3: Connect Ethernet by IP

3. If you are upgrading using an Ethernet connection, click **Ethernet**.
 - To identify the device by specifying the device name, click **BY NAME** (see [Figure 2](#)), enter the name of the device under Machine Name and click **OK**
 - To identify the device by specifying the IP address and port, click **BY IP** (see [Figure 3](#)), enter the IP address and port of the device and click **OK**

Note: To upgrade BY NAME, the device must be DHCP Enabled (see [Figure 6](#))

- To reset the device address to the factory default address, click Factory Default Address (in **BY IP**) and the address 192.168.1.39 appears. Click **OK**

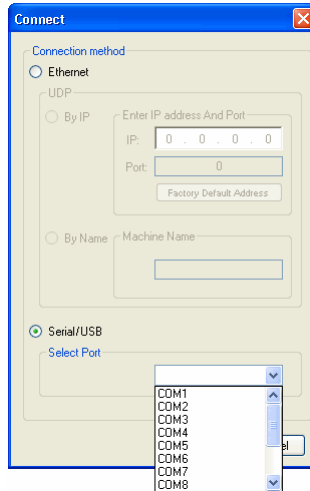


Figure 4: Connect Serial/USB

4. If you are upgrading using an RS-232 or USB connection, click **Serial/USB** (see [Figure 4](#)) and then:
 - Click the drop-down box to show the COM ports, and
 - Select a COM port to connect (from COM1 to COM13) and click **OK**

Note: If you try to connect to a device and it does not respond, the following error message appears. Click **OK**. Verify that the device is powered on, the cable connection is good, the switch on the device is set to “Program”, and that you are trying to connect by the correct method.



Figure 5: Error Message

5. After pressing **OK** on the *Connect Window*, the wizard searches the line for connected devices. All detected devices are displayed in the device list box under “Please select the device for update”:

Note: In the *Device Properties* section, you can update any of the active fields that have a white background. After making any changes, click **Set**.

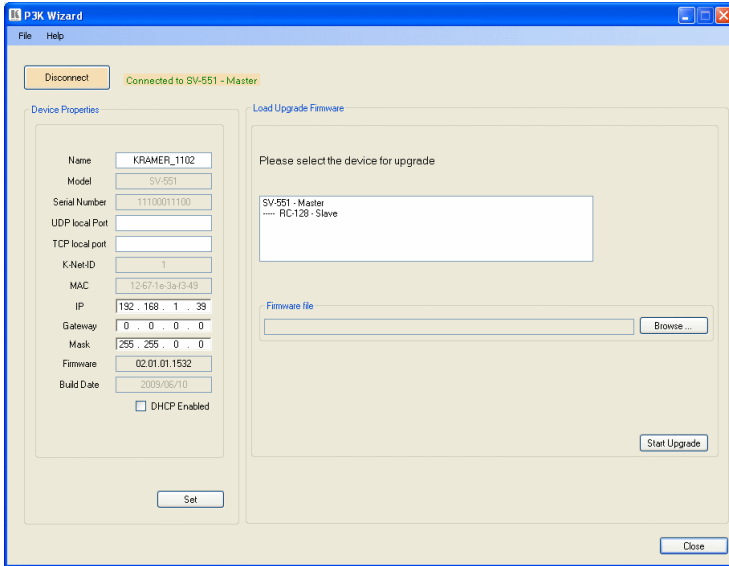


Figure 6: Device Selection

6. In the device list box, click to select the target device.
7. Next, select the firmware file to upgrade by clicking **Browse** next to the *Firmware file* box.
The *Open File* window opens:

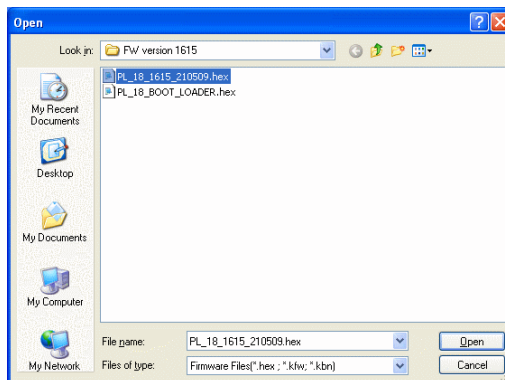


Figure 7: Open File Window

8. Navigate to the folder containing the firmware file (for example, C:\Program Files\Kramer Flash).

9. Select the firmware file you downloaded in section [1.1.1](#) and click **Open**. The firmware file appears in the *Firmware file* box.

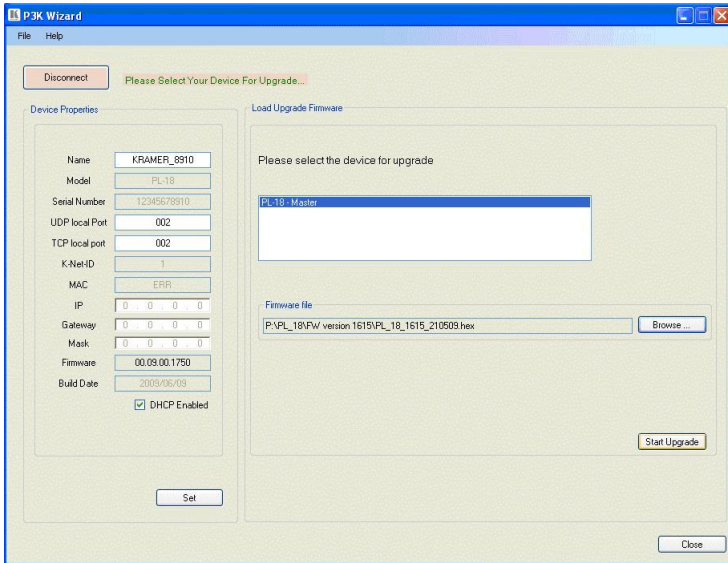


Figure 8: Device and File Selected

10. Click the **Start Upgrade** button to begin the file transfer. The *Warning* window appears:

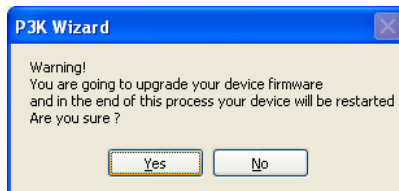


Figure 9: Warning Window

11. Click **Yes** to continue. *Load Progress* appears in the lower box:

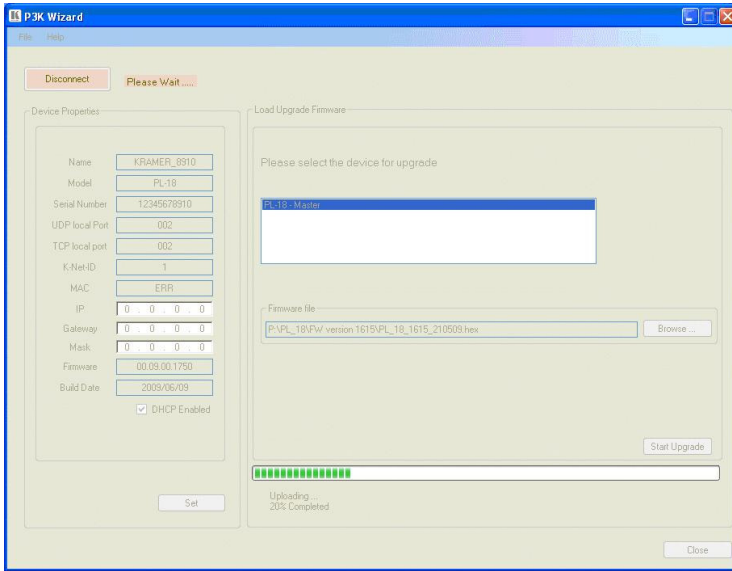


Figure 10: Load Progress

12. When the upload is finished, the completion message appears:

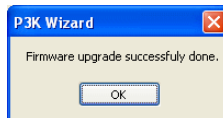


Figure 11: Completion Message

13. Click **Close** to close the P3K Wizard and remove the cable that connects the **Product** to the PC.

1.2 Changing the Device Parameters

To change the device parameters do the following:

1. Connect a PC to the **Product** (see section [1.1.2](#)).
2. Open the P3K Wizard (see [Figure 1](#)).
3. Click the **Connect** button to open the *Connect* window (see [Figure 2](#)).
4. Choose on the appropriate type of connection: Ethernet BY IP, BY NAME, or SERIAL/USB, and click **OK**.
The Connect window disappears and the Device Properties become visible.
5. Change the parameters as required and click **SET**.