



KRAMER ELECTRONICS LTD.

SID-XxN Firmware Upgrade Instruction

This instruction explains how to upgrade the firmware in the **SID-XxN** unit.

The **SID-XxN** firmware is located in FLASH memory, which lets you upgrade to the latest Kramer firmware version in minutes! The process involves:

- Downloading from the Internet (see [Section 1](#))
- Connecting the PC to the RS-232 port (see [Section 2](#))
- Upgrading the firmware (see [Section 0](#))

1 Downloading from the Internet

To download the latest firmware file from the Internet:

1. Go to our Web site at <http://www.kramerelectronics.com>.
2. From the Technical Support section, download the file: "SID-XXN_XX.zip".
3. Extract the file: "SID-XXN_XX.zip" to a folder (for example, C:\Program Files\Kramer Flash).
4. Run file: "Flash Magic.EXE" and install the software.

2 Connecting the PC to the RS-232 Port

Before installing the latest Kramer firmware version on the **SID-XxN**, do the following:

1. Turn OFF the power on the **SID-XxN** unit.
2. Connect the RS-232 3-pin PROG port on the **SID-XxN** unit without null-modem adapter with a 3-wire cable (Kramer C-D9F/3PM or similar) to the RS-232 9-pin D-sub COM port on your PC.
3. On the back panel, slide the DIP switch #1 (PROG) down to ON position, using a screwdriver.
4. Turn ON the power on the **SID-XxN**.

3 Upgrading the Firmware

To upgrade the firmware, perform the following steps:

1. Double click the desktop icon: “Flash Magic”.

The Flash Magic screen appears as illustrated in Figure 1.

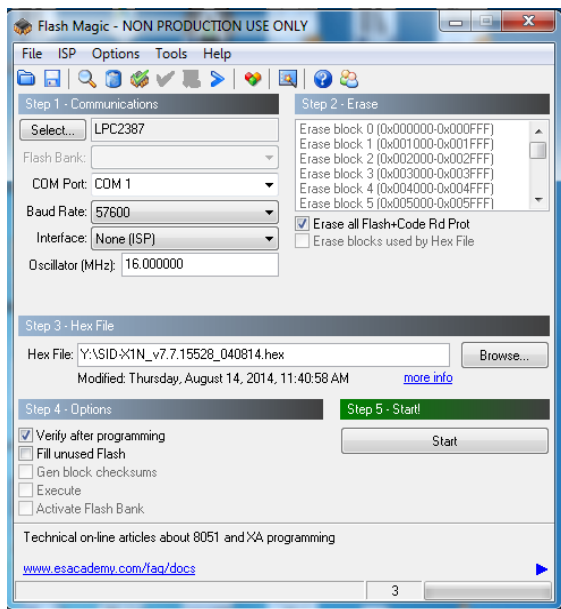


Figure 1: Flash Magic Screen

2. Under the “Step 1 – Communications” area, set the definitions on the screen as follows:
 - COM Port: select the active COM port on your computer
 - Baud Rate: 57600
 - Device: LPC2387
 - Interface: None (ISP)
 - Oscillator Freq. (MHz): 16.000
3. Under the “Step 2 – Erase” area, check the “Erase all Flash+Code Rd Prot” box.

4. Under the “Step 3 – Hex File” area select the hex file. For example, select “*SID-XXN_12.hex*”.
5. Under the “Step 4 – Options” area, check the “Verify after programming” box.
6. Under the “Step 5 – Start!” area, press the start button and wait for the completion of the process.
7. Close the “*Flash Magic*” window.
8. Turn OFF the power on the **SID-XxN**.
9. Disconnect the *RS-232* panel port on the **SID-XxN**.
10. On the **SID-XxN** back panel, slide DIP switch #1 back to NORMAL.
11. Turn ON the power on the **SID-XxN**.