



KRAMER ELECTRONICS LTD.

USER GUIDE

Kramer 32-Bit Driver Installation Instructions

P/N: 2900-300179 Rev 1

Installing the Kramer 32-bit Driver

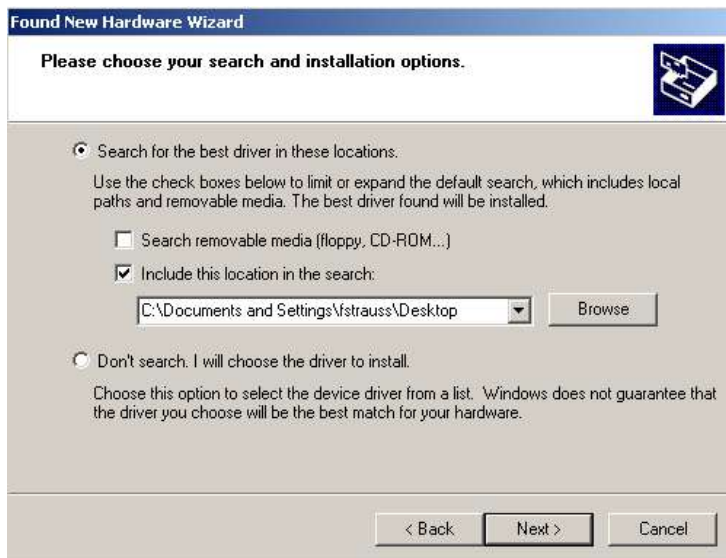
Note: The driver currently only works on 32-bit systems. This procedure illustrates the installation on Windows® XP.

To install the **32-Bit Driver**, do the following:

1. Navigate to the Kramer Web site at <http://www.kramerelectronics.com>, search for the product you want to install and click the *Downloads* tab.
2. Click on the link shown for the **32-Bit Driver**, download the driver to your desktop and extract the two zipped USB driver files to the desktop.
3. Connect the power supply to the device.
4. Connect the USB cable between your computer and the device.
5. After a few seconds the “*Found New Hardware*” message appears and the following window opens:



6. When asked “What do you want the wizard to do?” select “Install from a list or specific location (Advanced)” and click **Next**. The following screen appears:



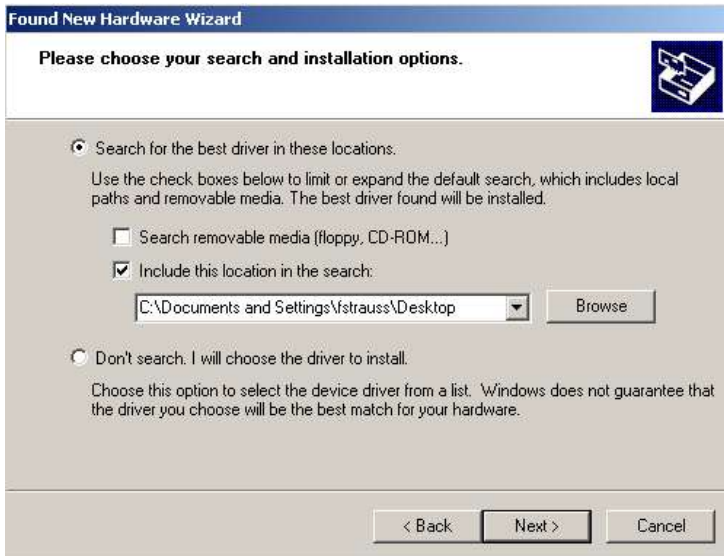
7. Click *Search for the best driver in these locations* and check *Include this location in the search*. Click **Browse**.

The following screen appears:



8. Navigate to the Desktop and click **OK**.

The previous screen reappears:



9. Click **Next**.

A Warning screen may appear:



10. If the warning screen appears, click **Continue Anyway**.

The following window appears:



11. Click **Finish**.

The USB driver has successfully installed and you can continue to install any control software.