



Scan for full manual

WXA-H1, WXA-HU Quick Start Guide

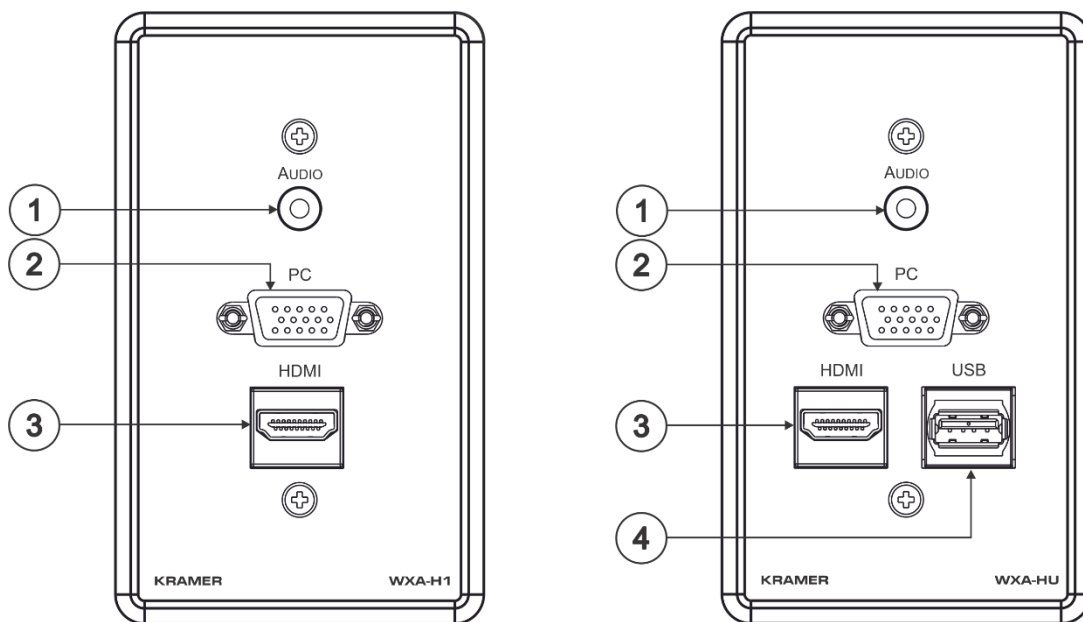
This guide helps you install and use your WXA-H1, WXA-HU for the first time.

Go to www.kramerav.com/downloads/WXA-H1 to download the latest QS guide.

Step 1: Check what's in the box

- ✓ WXA-HU 1 Gang Passive Pass-through Wall Plate OR, WXA-H1 1 Gang Passive Pass-through Wall Plate
- ✓ 1 Quick start guide

Step 2: Get to know your WXA-H1, WXA-HU



#	Feature	Function
1	AUDIO 3.5mm Mini Jack	Unbalanced analog audio signal pass-through.
2	PC 15-pin HD Connector	Computer graphics signal pass-through.
3	HDMI Connector	HDMI signal Pass-through
4	USB Port	USB signal pass-through

The terms HDMI, HDMI High-Definition Multimedia Interface, and the HDMI Logo are trademarks or registered trademarks of HDMI Licensing Administrator, Inc.



For optimum range and performance use the recommended Kramer cables available at www.kramerav.com/product/WXA-H1. Using third-party cables may cause damage!



Safety Instructions

Caution: There are no serviceable parts inside the unit. See www.KramerAV.com for updated safety information.

