



Scan for full manual

TBUS-20XL WAVES Quick Start Guide

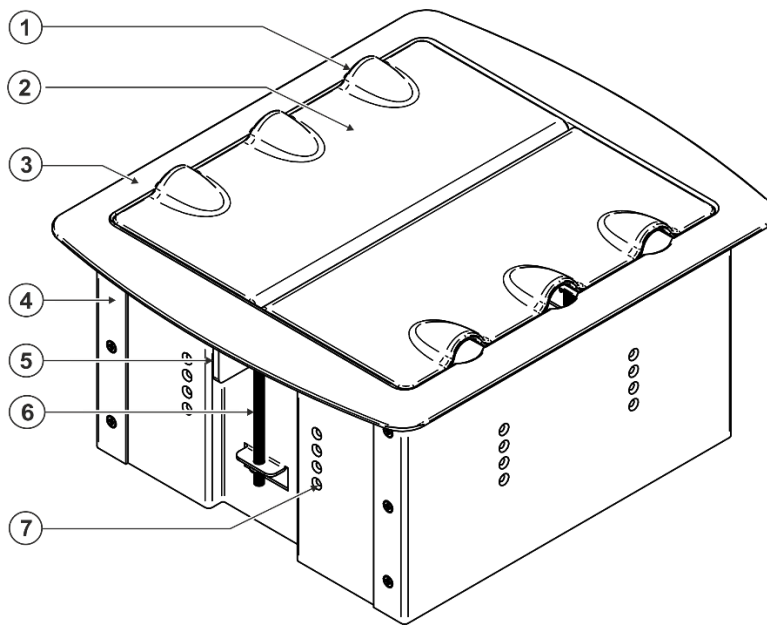
This guide helps you install and use your TBUS-20XL WAVES for the first time.

Go to www.kramerav.com/manual/TBUS-20XL WAVES to download the latest user manual

Step 1: Check what's in the box

- ✓ TBUS-20XL WAVES Table Connection Bus
- ✓ 1 Metal cut-out template
- ✓ 1 Quick start guide

Step 2: Get to know your TBUS-20XL WAVES



#	Feature	Function
1	Cable Openings (x6)	Pass cables through the wave-shaped openings.
2	Lid (x2)	Open the two lids towards the center of the device.
3	Outer Rim with 8 Embedded Magnets.	Once the housing is installed in the table, place the cover so that the rim magnets connect to the housing edge and the rim fits over the table surface.
4	TBUS Housing	Fit inside a table (or any other surface).
5	Latch Bracket (x2)	Tighten to secure the unit to the table's surface.
6	Mounting Screws (x2)	Use to secure the TBUS-20XL WAVES to the table.
7	Inner Frame Height Adjustment Screw Holes	Use to adjust the height of the mounted inner frame.

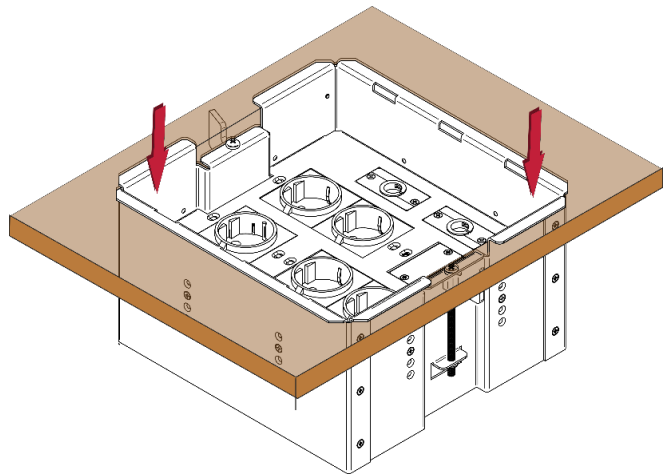
Step 3: Install the TBUS-20XL WAVES

1. Cut an opening in the table using the metal cut-out template. Before cutting check the latest cut-out dimensions from the Kramer website at [www.kramerav.com/downloads/TBUS-20XL WAVES](http://www.kramerav.com/downloads/TBUS-20XL_WAVES):
 - Place the cut-out template on the surface of the table exactly where you want to install the **TBUS-20XL WAVES**.
 - Attach the cut-out template to the table with the included screws.
 - Following the **inside** edge of the template, cut a hole in the table surface according to the dimensions (217 +2mm x 230+2mm; 8.5+0.08" x 9.05+0.08").
 - Unscrew and remove the template from the surface of the table and clean the table surface.Take care not to damage the table. If needed, you can download a full-scale template from the Kramer website at [www.kramerav.com/downloads/TBUS-20XL WAVES](http://www.kramerav.com/downloads/TBUS-20XL_WAVES).



Take care not to damage the table. Kramer Electronics is not responsible for any damage caused to the table.

2. Make sure that:
 - All the inserts are mounted onto the inner frame, as required.
 - The inner frame is correctly installed inside the **TBUS-20XL WAVES** housing.
 - The **TBUS-20XL WAVES** lid is off.
3. Carefully insert **TBUS-20XL WAVES** into the cut-out opening (with lid removed).
4. Screw the mounting screws on both sides of the housing until both latch brackets are tightened against the surface from underneath.
5. Connect the cables and power sockets from under the table.
6. Place the lid over the housing (the magnets attach to the rim of the housing).



TBUS-20XL WAVES is ready to use.

