



Scan for full manual

RC-63DLN Quick Start Guide

This guide helps you install and use your RC-63DLN for the first time.

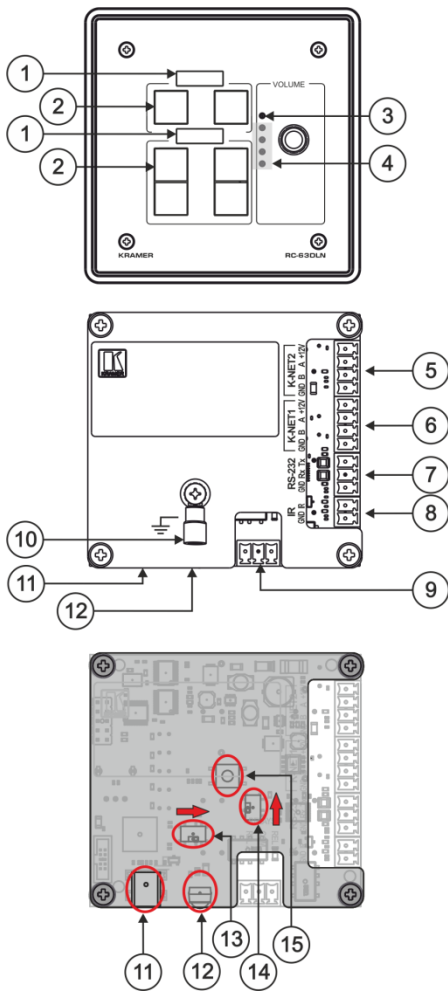
Go to www.kramerav.com/downloads/RC-63DLN to download the latest user manual and check if firmware upgrades are available.

Step 1: Check what's in the box

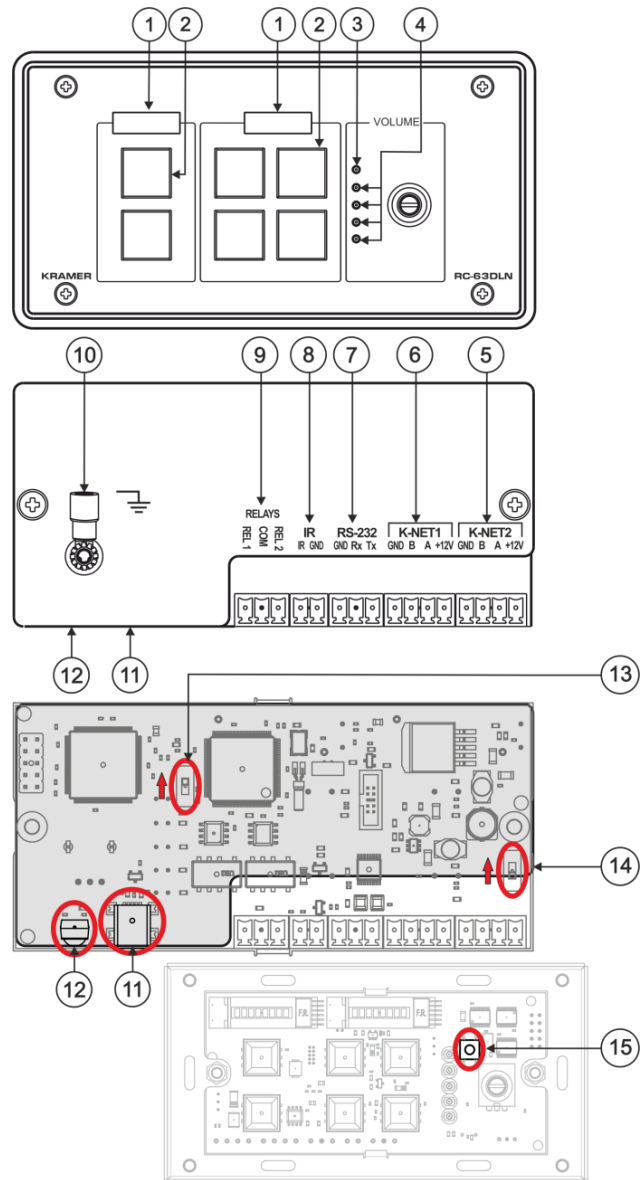
- ✓ RC-63DLN Room Controller
 - ✓ Remote control transmitter with batteries
- ✓ 1 Bracket set
 - ✓ 1 Power cord
- ✓ 4 Rubber feet
 - ✓ 1 Quick start guide

Step 2: Get to know your RC-63DLN

US Version



EU / UK Version

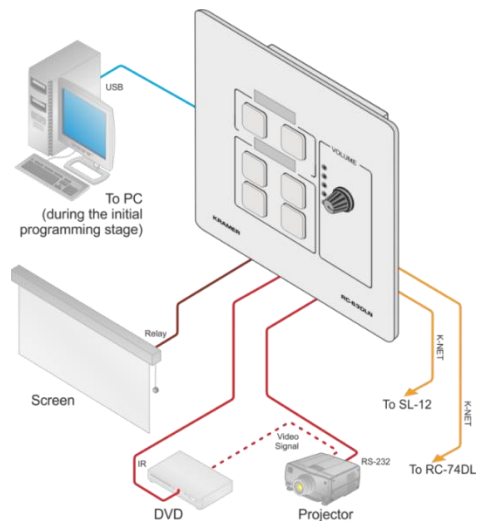


#	Feature	Function
1	2 LCD Labels	Display the name of each button group; programmed via the K-Config configuration software
2	6 Configurable Buttons	Programmed for distinct functions via the K-Config configuration software
3	Max volume LED	Lights red to indicate maximum volume
4	Volume level LEDs	Light according to the volume level
5	K-NET2 Connector	Connects to the Ground, RS-485 communication, and power supply
6	K-NET1 Connector	Note: The Ground is sometimes connected to the shield of the RS-485 cable.
7	RS-232 Port (GND, Rx, Tx)	Connects to A/V equipment, PC or serial controller
8	IR Port	Controls a device via an IR Emitter
9	RELAY Ports	Connect to room items such as lighting and screen settings
10	Grounding Screw	Connects to grounding wire (optional)
11	PROGRAM (USB) Connector	Connects to a computer for system configuration, firmware upgrade, or setting the K-NET ID no.
12	IR IN built-in IR Receiver	Used to learn the IR commands from a machine's remote control transmitter.
13	PROG Switch	For technical support use only. Note: Should be set in the direction of the arrow for normal operation.
14	K-NET TERM Switch	Controls K-NET bus termination: <ul style="list-style-type: none"> • Push the switch in the direction of the arrow to terminate. • Push the switch away from the direction of the arrow to leave unterminated. Note: The last physical device on a K-NET bus must be terminated. To access the K-NET termination switch, insert a small screwdriver into the gap between the rear panel PCB and the metal rear panel cover.
15	RESET TO DEFAULT Button	To reset memory to the factory default K-NET ID auxiliary setting (ID=2), disconnect the power and then reconnect it while using a small screwdriver to press the RESET TO DEFAULT button. Note: This operation should be carried out by authorized Kramer technical personnel or by a qualified system integrator. To access the RESET TO DEFAULT button, insert a small screwdriver into the gap between the rear panel PCB and the metal rear panel cover.

Step 3: Connect inputs and outputs

Always switch OFF the power on each device before connecting it to your RC-63DLN.

1. Connect the inputs and outputs to their appropriate devices using terminal block connectors (see example on the right):
 - I/O ports: 1 RS-232, 2 K-NET
 - Outputs: 1 infrared, 2 relays
2. Connect 12V DC power to the unit if power is not available over the K-NET.
3. Mount the unit in a wall.



To achieve specified extension distances, use the recommended Kramer cables available at

www.kramerav.com/product/RC-63DLN.

Using third-party cables may cause damage!

Step 4: Connect power

Connect the power cord to RC-63DLN and plug it into the mains electricity.

Safety Instructions (See www.kramerav.com for updated safety information)

Caution:

- For products with relay terminals and GPIO ports, please refer to the permitted rating for an external connection, located next to the terminal or in the User Manual.
- There are no operator serviceable parts inside the unit.

Warning:

- Use only the power cord that is supplied with the unit.
- Disconnect the power and unplug the unit from the wall before installing.

Step 5: Operate RC-63DLN

Operate the unit via the front panel buttons or remotely by AUX. keypad over K-NET.

Note: By default, the RC-63DLN is set up as an auxiliary device.

Configure and customize the RC-63DLN

- Configure the unit using **K-Config** software, available at www.kramerav.com/support/product_downloads.asp.
- Customize the buttons by inserting the appropriate labels under the button caps.