



Scan for full manual

KT-107RB Quick Start Guide

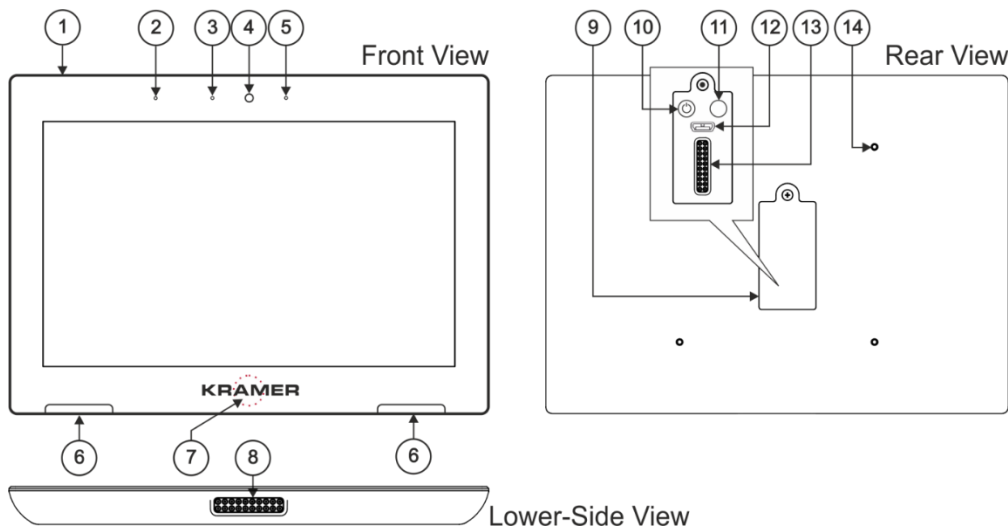
This guide helps you install and use your KT-107RB for the first time.

Go to www.kramerav.com/downloads/KT-107RB to download the latest user manual and check if firmware upgrades are available.

Step 1: Check what's in the box

- ✓ KT-107RB Touch Panel
- ✓ Tabletop mount
- ✓ On-wall mount unit
- ✓ 1 Quick start guide
- ✓ 1 C-USB/Micro B cable
- ✓ AC/DC adapter
- ✓ Installation screws
- ✓ Panel mount plate
- ✓ 1 right-angle OTG USB cable

Step 2: Get to know your KT-107RB



#	Feature	Function
1	Hidden Reset Button	Located on top-side. Insert a pin and hold for a few seconds to reset KT-107RB .
2	Light Sensor	Automatically adjusts the screen brightness according to the room lighting conditions.
3	Activity RGB LED	Lights green when powered, flashes green when charging the battery, lights red when camera on.
4	Camera	For remote room viewing or video conferencing.
5	Microphone	For audio communication, recording or conferencing.
6	Speakers	To output the sound.
7	Control Button	Press and hold (for 2 seconds) to open the pop-up menu which lets you power down the unit, reboot it or return to the Home-page. The Control button is password protected (default: Kramer).
8	Tabletop Mount Connector	For connecting to the tabletop mount.
9	Cover	Covers the wall mount connections and power button.
10	Power Button	Press to power on the KT-107RB . When powered, press briefly to open the pop-up menu and power down the device, reboot it or return to the Home-page. Press and hold to power down the device immediately. This button is also used for firmware upgrade.
11	Volume-up Button	Used for firmware upgrade. Use also to increase KT-107RB speaker volume.
12	Micro USB Port	For connecting to an adjacent on-wall USB device and for firmware upgrade.
13	Flat Cable Connector	For connecting to the on-wall mount unit.
14	Connecting Holes	For connecting to the tabletop mount or the panel mount plate. To prevent potential damage to the Touch Panel , use only Kramer supplied screws and mounts.

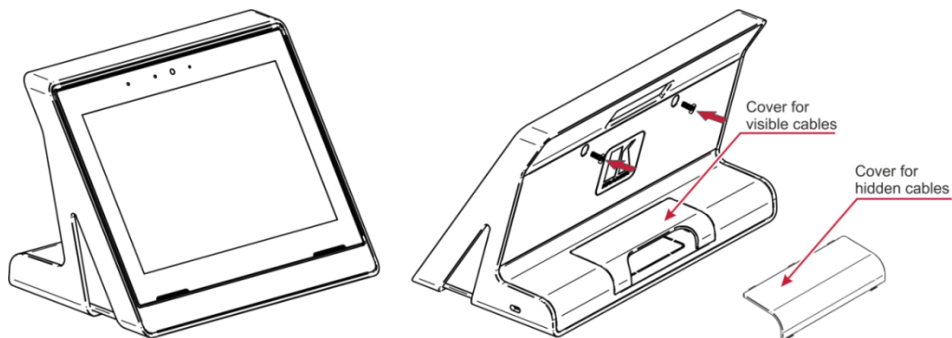
Step 3: Mounting the KT-107RB

Mounting on a table using one of the following options:

Portable Mount: place the tabletop mount on the table. Connected cables remain visible and the table remains intact.

Secure Mount: secure the tabletop mount to the table as follows:

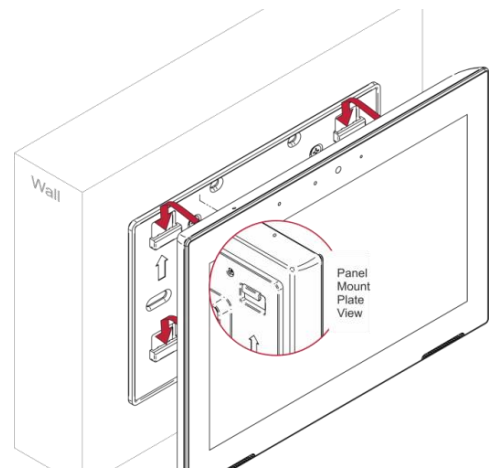
1. Measure the exact location on the surface of the table where you want to install the **KT-107RB**.
2. Drill a hole in the table and optionally cut the cable pass-through opening according to the cut-out dimensions defined in the user manual.
3. Secure the tabletop mount to the table using the M5x60 secure screw.
4. Connect the Ethernet port to a PoE-enabled source. Optionally, you can connect the power adapter too (as backup).
5. Replace the appropriate cover and place the **KT-107RB** over the tabletop mount (the **Touch Panel** is magnetically held in place), by first inserting the lower part of the **Touch Panel** then carefully laying the **KT-107RB** in place.
6. Wait for the Home-page to load and then secure the **KT-107RB** to the tabletop mount from the rear side (using 2 M2x4 screws, supplied with the unit).
7. Optionally, lock the tabletop mount with a Kensington locker (not supplied).



Mounting on the wall:

Before mounting **KT-107RB** on a wall, install an in-wall junction box (recommended boxes are listed in the user manual)

1. Attach the on-wall mount unit to the installed junction box (top side up see indication arrows on unit). Connect Ethernet and/or power cables and optionally, insert the right-angle USB cable (supplied) for connecting to an adjacent external USB device.
2. Screw the 4 wall-mounting screws (supplied) through the screw openings. The various screw openings fit various types of wall junction boxes.
3. On the rear side of the **KT-107RB**, remove the screw cover and the cover (by slightly pressing downwards and then pulling out) and set aside.
4. Attach the panel mount plate to the rear side of the **KT-107RB** (using 4 M2x4 screws, supplied).
5. Connect the flat cable from the on-wall mount (attached to the in-wall junction box) to the connector on the rear of **KT-107RB**.
6. Hang the **KT-107RB** on the wall by sliding the tabs on the attached panel mount plate over the grooves on the on-wall mount unit.



For optimum range and performance use the recommended Kramer cables available at www.kramerav.com/product/KT-107RB. Using third-party cables may cause damage!



- Ensure that the environment (e.g., maximum ambient temperature & air flow) is compatible for the device.
- Avoid uneven mechanical loading.
- Appropriate consideration of equipment nameplate ratings should be used for avoiding overloading of the circuits.
- Reliable earthing of rack-mounted equipment should be maintained.
- Maximum mounting height for the device is 2 meters.

Step 4: Connect the power

Connect the power cord to **KT-107RB** and plug it into the mains electricity.



Safety Instructions (See www.kramerav.com for updated safety information)

Caution:

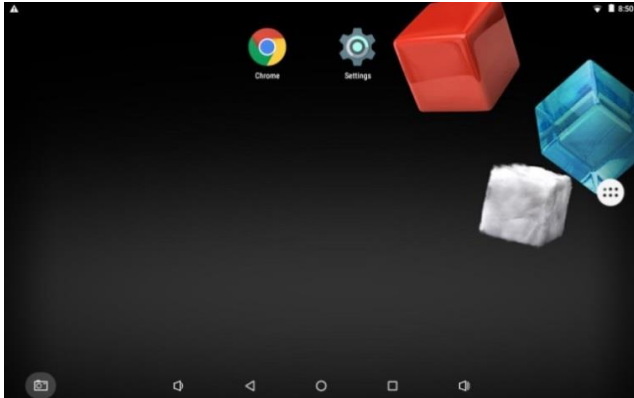
- For products with relay terminals and GPIO ports, please refer to the permitted rating for an external connection, located next to the terminal or in the User Manual.
- There are no operator serviceable parts inside the unit.

Warning:

- Use only the power cord that is supplied with the unit.
- Disconnect the power and unplug the unit from the wall before installing.

Step 5: Customizing the KT-107RB settings

The Settings page is accessible from the Home-page and enables customizing the KT-107RB settings:



To modify date and time settings:

1. In the Home-page, click **Settings**.
2. Scroll down to the System area and click **Date & time**.
3. Enable **Automatic date & time** to derive the date and time from the Network. When disabled, enter the date and time manually.
4. Select the time format.

To configure the Boot Start App:

1. In the Home page click **Settings**.
2. Click **Control**.
3. Click **Select Boot Start App** and select one of the available Apps (Kramer Control or K-Touch) to appear upon startup or select None.

To modify display settings:

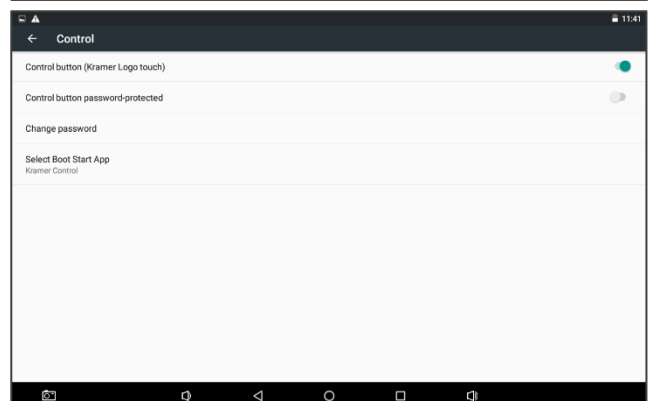
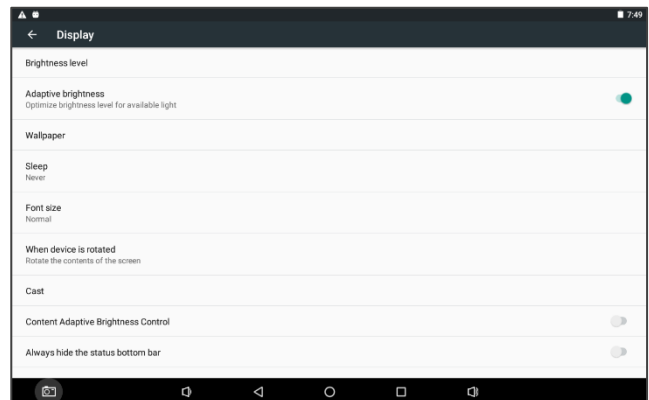
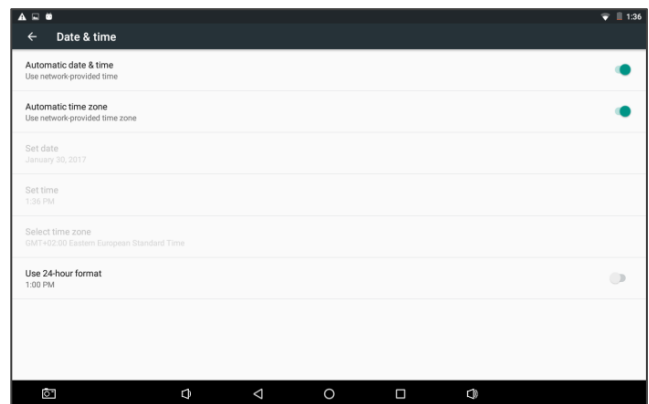
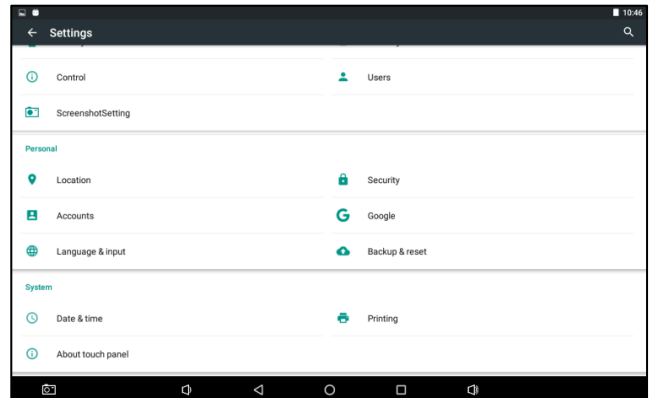
1. In the Home-page, click **Settings**.
2. Select **Display**.
3. Set the following (as required):
 - **Brightness:** brightness level, adaptive brightness
 - **Status Bar:** Show/hide lower and/or top status bar
 - **Auto Sleep:** Sleep timeout.

To modify Control button settings:


1. In the Home-page, click **Settings**.
2. Select **Control**.
3. Enable or disable the **Control button (Kramer Logo touch)**.
4. Set Control button password protected to be enabled/disabled.

To change the password of the control button:

1. In the Home-page, click **Settings**.
2. Select **Control**.
3. Click **Change password** (default: Kramer).
4. Follow the instructions in the Password Set window.



Technical Specifications:

Tabletop Mount Ports:	1 1000/100/10BaseT Ethernet on RJ-45 connector; 1 micro USB 2.0 2-pin terminal block for DC power supply		
On-wall Mount Ports:	1 1000/100/10BaseT Ethernet on RJ-45 connector 1 2-pin terminal block connector for DC power supply		
Speakers:	2x1 W, 8 ohm		
Microphone:	-42dB ±3dB @ 1kHz sensitivity		
CPU Performance:	1.6GHz Quad Core, GPU, 2GB RAM, 16GB Flash		
OS Software:	Android 6.0.1		
Multi Touch:	10 points, 2-finger gesture		
Display:	7" IPS, 1280x800 RGB pixels, 16:10 aspect ratio, ±80° horizontal/vertical viewing angles, 400cd/m2 brightness, 800:1 contrast ratio		
Video Format:	Decoding: H.265/HEVC; H.264/AVC; MPEG-1/2/4; DivX 3/4/5/6; MVC; GOOGLE VP8; VC-1; H.263; SORENSON SPARK; ON2 VP6; MOTION JPEG; Encoding: H.264/AVC		
Ethernet Port:	10/100/1000Mbps PoE LAN		
Wireless Communication:	Wi-Fi 802.11 b/g/n/ac, Bluetooth 4.0		
W	 FOR Wi-Fi 802.11 AC, 5GHZ FREQUENCY BAND RANGE IS RESTRICTED TO UP TO 5.35GHZ		
Camera:	Front, 2M pixels, HD 720p		
Battery:	Rechargeable, supports up to 3 hours of Wi-Fi operation		
Controls:	Hidden reset button, power button, volume-up button Touch panel status LED: flashes green during charging, green for fully charged, red for camera on		
Power Inputs:	Power over Ethernet (complies with IEEE802.3af and IEEE802.3at PoE standards), power supply unit		
Power Consumption:	5V DC, 3A		
Operating Temperature:	0° to +40°C (32° to 104°F)	Storage Temperature:	-10° to +55°C (14° to 131°F)
Humidity:	10% to 90%, RHL non-condensing	Case Design:	Black body and cover
Dimensions:	Shipping dimensions: 22.4cm x 13cm x 20.6cm (8.8" x 5.12" x 8.1"), W, D, H Touch panel: 17.8cm x 1.3cm x 13cm (7" x 0.51" x 5.12"), W, D, H Tabletop mount: 18.5cm x 10.7cm x 12.4cm (7.28" x 4.2" x 4.88"), W, D, H Panel mount plate: 14.6cm x 3.7cm x 9.2cm (5.75" x 1.46" x 3.62"), W, D, H On-wall mount unit: 14.6cm x 1.1cm x 9.1cm (5.75" x 0.43" x 3.58"), W, D, H		
Weight:	Shipping weight: 1.8kg (3.97lbs) approx.; Touch panel: 0.37kg (0.8lbs) approx.		
Included Accessories:	Power supply unit adapter (5V, 4.0A AC/DC), tabletop mount, on-wall mount unit, panel-mount plate, right-angle OTG USB cable, installation screws		
Certifications:	CE/CB, FCC, ROHS, REACH		
Mounting Options:	Table top (with tabletop mount unit), on-wall (with mount unit and panel mount plate)		
Specifications are subject to change without notice at www.kramerav.com			