



Scan for full manual

KT-107 Quick Start Guide

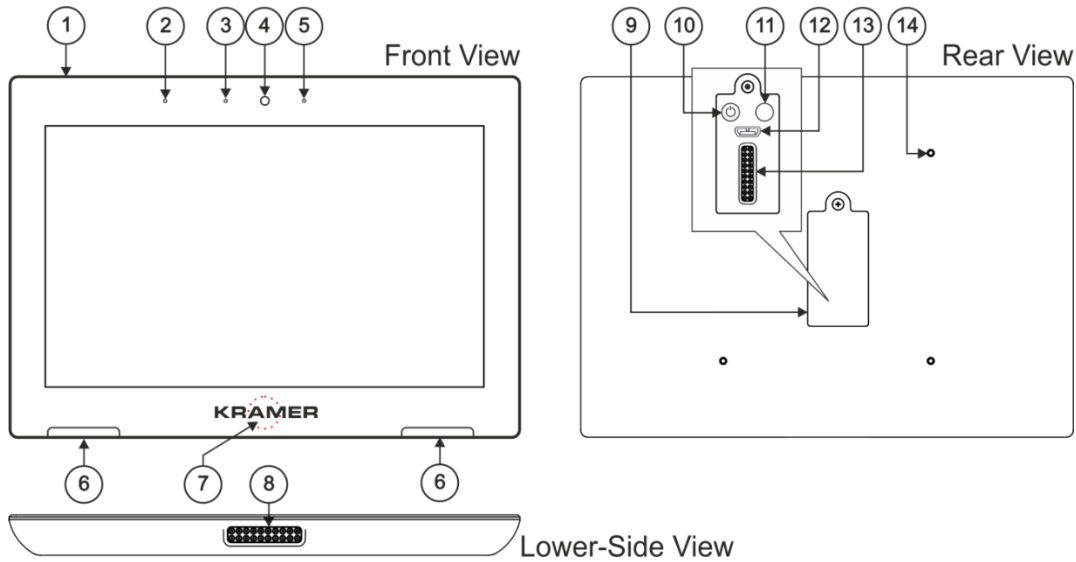
This guide helps you install and use your **KT-107** for the first time.

Go to www.kramerav.com/downloads/KT-107 to download the latest user manual and check if firmware upgrades are available.

Step 1: Check what's in the box

- ✓ KT-107 Touch Panel ✓ Tabletop mount ✓ On-wall mount unit ✓ 1 Quick start guide ✓ 1 C-USB/Micro B cable
- ✓ AC/DC adapter ✓ Installation screws ✓ Panel mount plate ✓ 1 right-angle OTG USB cable

Step 2: Get to know your KT-107

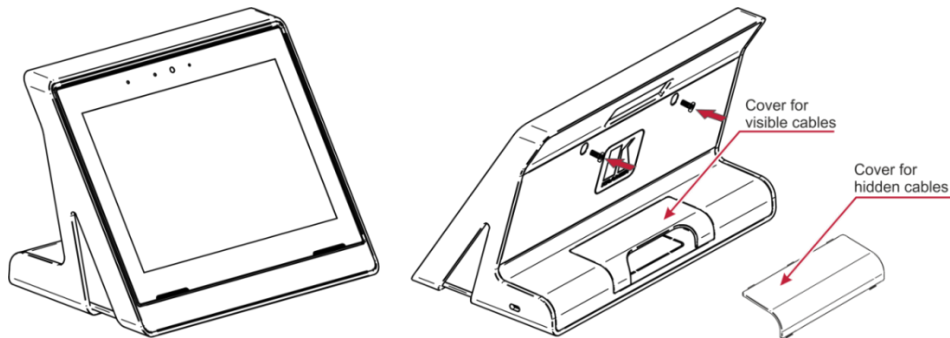


#	Feature	Function
1	Hidden Reset Button	Located on top-side. Insert a pin and hold for a few seconds to reset KT-107 .
2	Light Sensor	Automatically adjusts the screen brightness according to the room lighting conditions.
3	Activity RGB LED	Lights green when powered, flashes green when charging the battery, lights red when camera on.
4	Camera	For remote room viewing or video conferencing.
5	Microphone	For audio communication, recording or conferencing.
6	Speakers	To output the sound.
7	Control Button	Press and hold (for 2 seconds) to open the pop-up menu which lets you power down the unit, reboot it or return to the home page. The Control button is password protected (default: Kramer).
8	Tabletop Mount Connector	For connecting to the tabletop mount.
9	Cover	Covers the wall mount connections and power button.
10	Power Button	Press to power on the KT-107 . When powered, press briefly to open the pop-up menu and power down the device, reboot it or return to the home page. Press and hold to power down the device immediately. This button is also used for firmware upgrade.
11	Volume-up Button	Used for firmware upgrade. Use also to increase KT-107 speaker volume.
12	Micro USB Port	For connecting to an adjacent on-wall USB device and for firmware upgrade.
13	Flat Cable Connector	For connecting to the on-wall mount unit.
14	Connecting Holes	For connecting to the tabletop mount or the panel mount plate. To prevent potential damage to the Touch Panel , use only Kramer supplied screws and mounts.

Step 3: Mount your KT-107

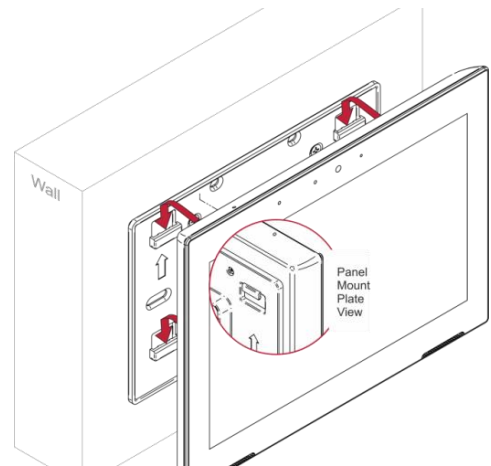
Place the tabletop mount on the table (Portable Mount). The connected cables remain visible, and the table remains intact. Or secure the device as follows (Secure Mount):

1. Measure the exact location on the surface of the table where you want to install the **KT-107**.
2. Drill a hole in the table and optionally cut the cable pass-through opening according to the cut-out dimensions defined in the user manual.
3. Secure the tabletop mount to the table using the M5x60 secure screw.
4. Connect the Ethernet port to a PoE-enabled source. Optionally, you can connect the power adapter too (as backup).
5. Replace the appropriate cover and place the **KT-107** over the tabletop mount (the **Touch Panel** is magnetically held in place), by first inserting the lower part of the **Touch Panel** then carefully laying the **KT-107** in place.
6. Wait for the home page to load and then secure the **KT-107** to the tabletop mount from the rear side (using 2 M2x4 screws, supplied with the unit).
7. Optionally, lock the tabletop mount with a Kensington locker (not supplied).



To mount the device on a wall:

1. Install an in-wall junction box (recommended boxes are listed in the user manual)
2. Attach the on-wall mount unit to the installed junction box (top side up see indication arrows on unit). Connect Ethernet and/or power cables and optionally, insert the right-angle USB cable (supplied) for connecting to an adjacent external USB device.
3. Screw the 4 wall-mounting screws (supplied) through the screw openings. The various screw openings fit various types of wall junction boxes.
4. On the rear side of the **KT-107**, remove the screw cover and the cover (by slightly pressing downwards and then pulling out) and set aside.
5. Attach the panel mount plate to the rear side of the **KT-107** (using 4 M2x4 screws, supplied).
6. Connect the flat cable from the on-wall mount (attached to the in-wall junction box) to the connector on the rear of **KT-107**.
7. Hang the **KT-107** on the wall by sliding the tabs on the attached panel mount plate over the grooves on the on-wall mount unit.



For optimum range and performance use the recommended Kramer cables available at www.kramerav.com/product/KT-107



- Ensure that the environment (e.g., maximum ambient temperature & air flow) is compatible for the device.
- Avoid uneven mechanical loading.
- Appropriate consideration of equipment nameplate ratings should be used for avoiding overloading of the circuits.
- Reliable earthing of rack-mounted equipment should be maintained.
- Maximum mounting height for the device is 2 meters.

Step 4: Connect the power

Connect the power cord to **KT-107** and plug it into the mains electricity.



Safety Instructions (See www.kramerav.com for updated safety information)

Caution:

- For products with relay terminals and GPIO ports, please refer to the permitted rating for an external connection, located next to the terminal or in the User Manual.
- There are no operator serviceable parts inside the unit.

Warning:

- Use only the power cord that is supplied with the unit.
- Disconnect the power and unplug the unit from the wall before installing.

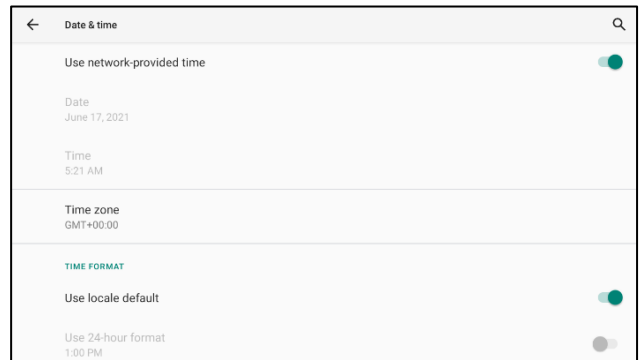
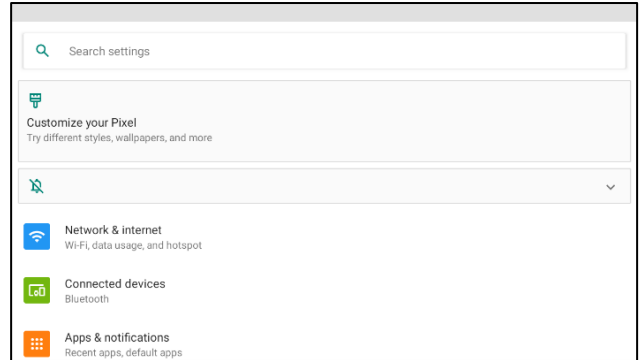
Step 5: Customize KT-107 settings

The Settings page is accessible from the home page and enables customizing the **KT-107** settings:



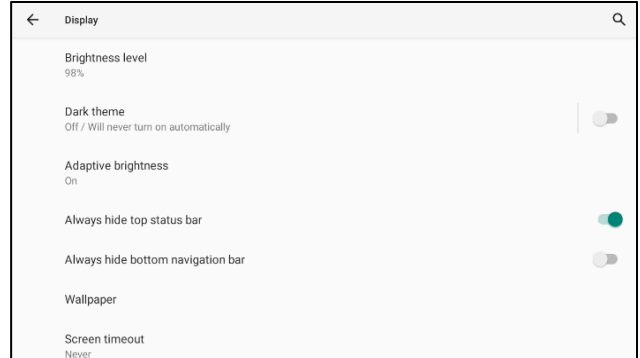
To change the date and time settings:

1. From the home page, tap **Settings**.
2. Go to **System** and tap **Date & time**.
3. To get the date and time from the **Network**, turn on **Use network-provided time**. When turned off, it is necessary to enter the date and time manually.
4. Below **Time Format**, select a time option.



To change the display settings:

1. From the home page, tap **Settings > Display**.
2. Set the following (as necessary):
 - **Brightness level:** brightness level, adaptive brightness.
 - **Always hide top status bar:** Show/hide top status bar.
 - **Always hide bottom navigation bar:** Show/hide bottom navigation bar.
 - **Screen timeout:** Sleep timeout.



To change the Control button settings:

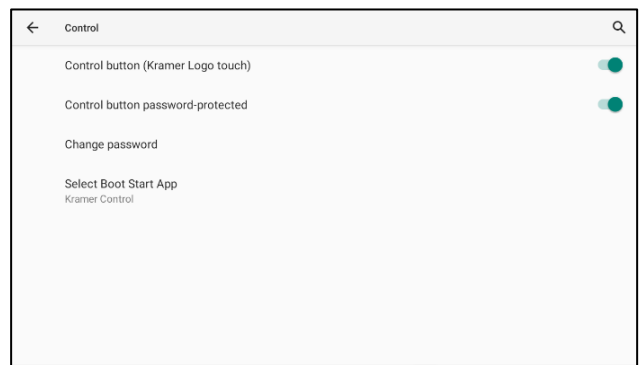
1. From the home page, tap **Settings > Control**.
2. Turn on or off the **Control button (Kramer Logo touch)**.
3. Set the **Control button password-protected** as on or off.

To change the Control button password:

1. From the home page, tap **Settings > Control**.
2. Tap **Change password** (the default is "Kramer").
3. Follow the instructions in the **Password Set** window.

To configure the Boot Start App

1. From the home page, tap **Settings > Control**.
2. Tap **Select Boot Start App** and select either **Kramer Control** or **None**. If you select the Kramer Control app, it opens on startup.



This equipment has been tested and found to comply with the limits for a Class A digital device, pursuant to Part 15 of the FCC Rules. These limits are designed to provide reasonable protection against harmful interference when the equipment is operated in a commercial environment.

This equipment generates, uses, and can radiate radio frequency energy and, if not installed and used in accordance with the instruction manual, may cause harmful interference to radio communications. Operation of this equipment in a residential area is likely to cause harmful interference in which case the user will be required to correct the interference at his/her own expense.

Changes or modifications not expressly approved by the manufacturer could void the user's authority to operate the equipment.

This device complies with Part 15 of the FCC Rules. Operation of the device is subject to the following conditions:

- This device may not cause harmful interference
- This device must accept any interference received, including interference that may cause undesired operation

Recommendations for safe exposure to non-ionizing radiation: Only use the device at least 20 centimeters away from your body.

Technical Specifications:

Tabletop Mount Ports:	1 1000/100/10BaseT Ethernet on RJ-45 connector; 1 micro USB 2.0 2-pin terminal block for DC power supply		
On-wall Mount Ports:	1 1000/100/10BaseT Ethernet on RJ-45 connector 1 2-pin terminal block connector for DC power supply		
Speakers:	2x1 W, 8ohm		
Microphone:	-42dB ±3dB @ 1kHz sensitivity		
CPU Performance:	1.6GHz Quad Core, GPU, 2GB RAM, 16GB Flash		
OS Software:	Android 10.0		
Multi Touch:	10 points, 2-finger gesture		
Display:	7" IPS, 1280x800 RGB pixels, 16:10 aspect ratio, ±80° horizontal/vertical viewing angles, 400cd/m2 brightness, 800:1 contrast ratio		
Video Format:	Decoding: H.265/HEVC; H.264/AVC; MPEG-1/2/4; DivX 3/4/5/6; MVC; GOOGLE VP8; VC-1; H.263; SORENSON SPARK; ON2 VP6; MOTION JPEG; Encoding: H.264/AVC		
Ethernet Port:	10/100/1000Mbps PoE LAN		
Wireless Communication:	Wi-Fi 802.11 b/g/n/ac, Bluetooth 4.0		
Camera:	Front, 2M pixels, HD 720p		
Battery:	Rechargeable, supports up to 3 hours of Wi-Fi operation		
Controls:	Hidden reset button, power button, volume-up button Touch panel status LED: flashes green during charging, green for fully charged, red for camera on		
Power Inputs:	Power over Ethernet (complies with IEEE802.3af and IEEE802.3at PoE standards), power supply unit		
Power Consumption:	5V DC, 3A		
Operating Temperature:	0° to +40°C (32° to 104°F)	Storage Temperature:	-10° to +55°C (14° to 131°F)
Humidity:	10% to 90%, RHL non-condensing	Case Design:	Black body and cover
Dimensions:	Shipping dimensions: 22.4cm x 13cm x 20.6cm (8.8" x 5.12" x 8.1"), W, D, H Touch panel: 17.8cm x 1.3cm x 13cm (7" x 0.51" x 5.12"), W, D, H Tabletop mount: 18.5cm x 10.7cm x 12.4cm (7.28" x 4.2" x 4.88"), W, D, H Panel mount plate: 14.6cm x 3.7cm x 9.2cm (5.75" x 1.46" x 3.62"), W, D, H On-wall mount unit: 14.6cm x 1.1cm x 9.1cm (5.75" x 0.43" x 3.58"), W, D, H		
Weight:	Shipping weight: 1.8kg (3.97lbs) approx.; Touch panel: 0.37kg (0.8lbs) approx.		
Included Accessories:	Power supply unit adapter (5V, 4.0A AC/DC), tabletop mount, on-wall mount unit, panel-mount plate, right-angle OTG USB cable, installation screws		
Certifications:	CE/CB, FCC, ROHS, REACH		
Mounting Options:	Table top (with tabletop mount unit), on-wall (with mount unit and panel mount plate)		
Specifications are subject to change without notice at www.kramerav.com			