



Scan for full manual

DIP-31M Quick Start Guide

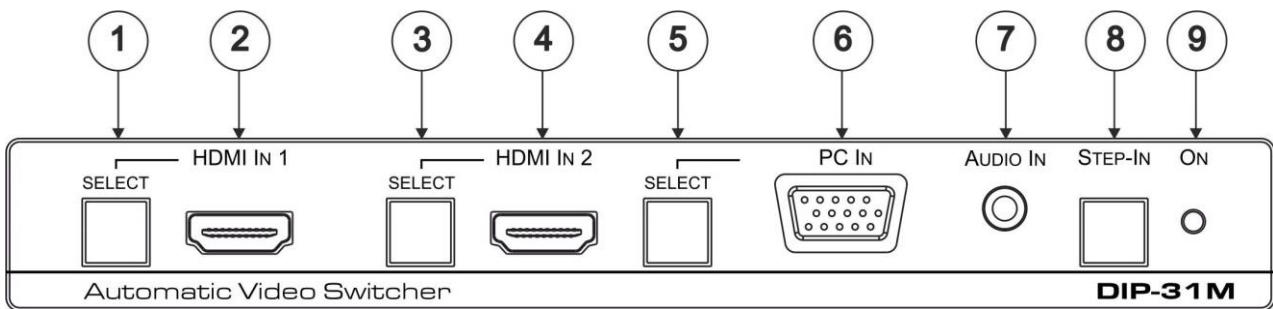
This guide helps you install and use your DIP-31M for the first time.

Go to www.kramerav.com/downloads/DIP-31M to download the latest user manual and check if firmware upgrades are available.

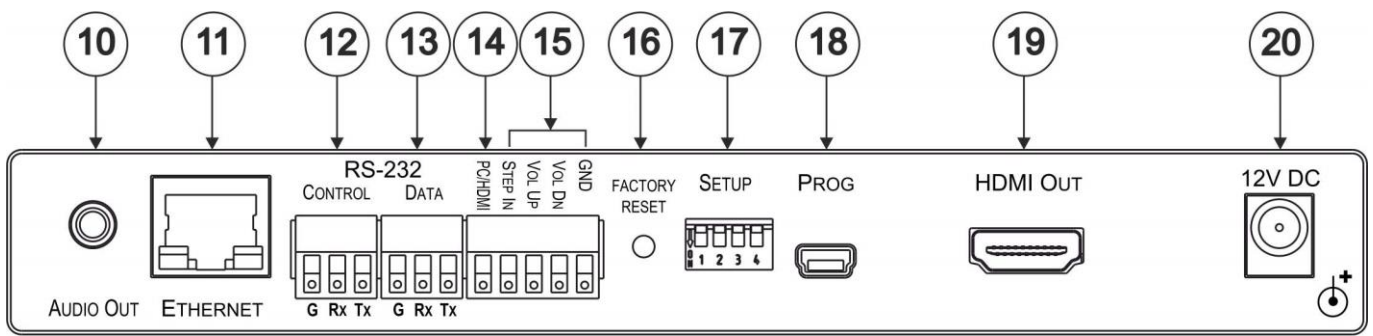
Step 1: Check what's in the box

- ✓ DIP-31M Automatic Video Switcher
- ✓ 1 Set of rack ears
- ✓ 1 Quick start guide
- ✓ 1 Power supply (12V DC)
- ✓ 4 Rubber feet

Step 2: Get to know your DIP-31M



#	Feature	Function
1	HDMI IN 1	SELECT Button Press to select the HDMI IN 1 input. When HDMI IN 1 is selected, the button lights and indicates the selected audio (see Step 5): Red – External audio from the analog Audio IN is selected Green – Embedded audio from HDMI IN 1 is selected
2		HDMI 1 Connector Connects to the first HDMI source
3	HDMI IN 2	SELECT Button Press to select the HDMI IN 2 input. When HDMI IN 2 is selected, the button lights and indicates the selected audio (see Step 5): Red – External audio from the analog Audio IN is selected Green – Embedded audio from HDMI IN 2 is selected
4		HDMI 2 Connector Connects to the second HDMI source
5	PC IN	SELECT Button Press to select the VGA input. When PC IN is selected, the button lights and indicates the selected audio (see Step 5): Red – External audio from the analog Audio IN is selected Green – No audio is selected
6		PC Graphics 15-pin HD Connector Connects to the VGA source, (for example, a laptop)
7	AUDIO IN 3.5mm Mini Jack Connects to the unbalanced, stereo audio source, (for example, the audio output of the laptop)	
8	STEP-IN Button Press to take control of the input that this device is connected to on a compatible switcher	
9	ON LED Lights green when the device is powered on	



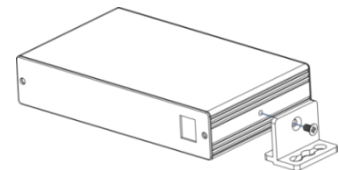
#	Feature	Function
10	AUDIO OUT 3.5mm Mini Jack	Connect to the unbalanced, stereo audio acceptor, (for example, active speakers)
11	ETHERNET RJ-45 Connector	Connect to the LAN, (Ethernet traffic or PC controller)
12	RS-232 CONTROL 3-pin Terminal Block	Connect to a serial controller or PC
13	RS-232 DATA 3-pin Terminal Block	Connect to a serial data source or acceptor
14	PC/HDMI Remote Toggle Switch Terminal Block	Connect to a remote switch to toggle between the HDMI and VGA inputs. Each press cycles through the priority inputs HDMI IN 1 → HDMI IN 2 → PC IN or a different priority cycle specified on the Video & Audio Settings Web page
15	Remote Contact-closure 4-pin Terminal Block	Connect to remote momentary switches to control step-in and audio volume
16	FACTORY RESET Button	Short press to reboot, long press to reset the device to factory default parameters
17	SETUP 4-way DIP-switch	Switches for setting the device behavior (see Step 5)
18	PROG Mini USB Connector	Connect to a PC to perform a firmware upgrade
19	HDMI OUT Connector	Connect to a compatible HDMI display
20	12V DC Connector	Connect to the supplied power adapter

The terms HDMI, HDMI High-Definition Multimedia Interface, and the HDMI Logo are trademarks or registered trademarks of HDMI Licensing Administrator, Inc.

Step 3: Install the DIP-31M

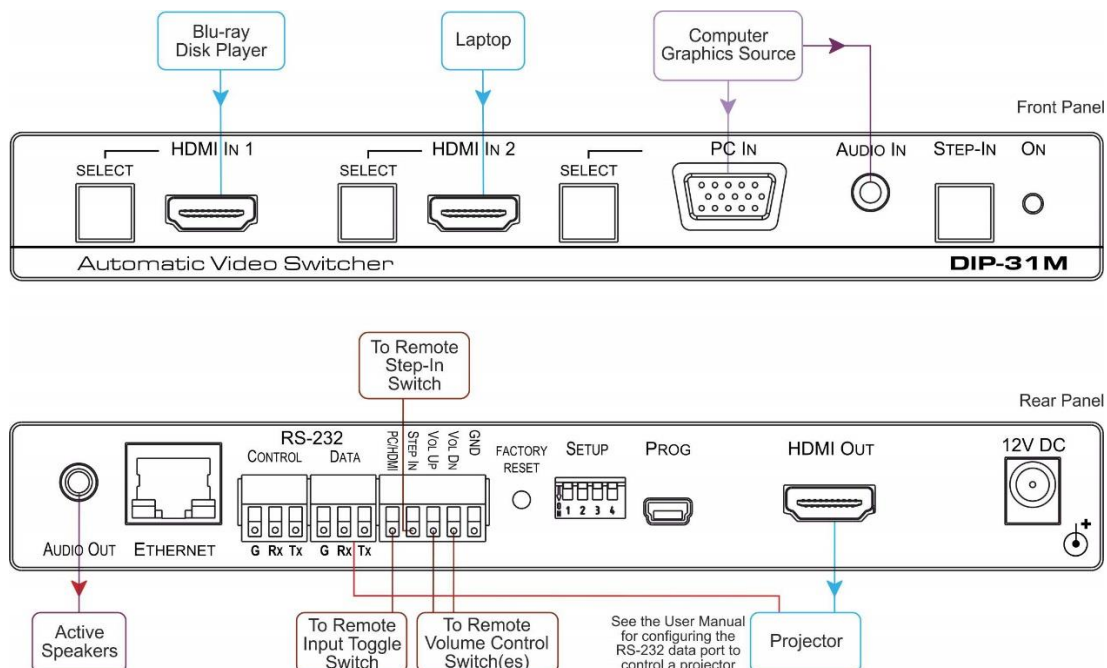
Install **DIP-31M** using one of the following methods:

- Attach the rubber feet and place the unit on a flat surface.
- Fasten a bracket (included) on each side of the unit and attach it to a flat surface. For more information go to www.kramerav.com/downloads/DIP-31M.
- Mount the unit in a rack using the recommended rack adapter (see www.kramerav.com/product/DIP-31M).



Step 4: Connect the inputs and outputs

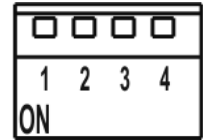
Always switch OFF the power on each device before connecting it to your **DIP-31M**. For best results, we recommend that you always use Kramer high-performance cables to connect AV equipment to the **DIP-31M**.



Step 5: Set the DIP-switches

Video Switching Selection

DIP-switch 1	DIP-switch 2	Video Input Selection
Off (up)	Off (up)	Automatic—Last connected. The last source connected to the unit is routed to the output
Off (up)	On (down)	Automatic—Priority selection. HDMI IN 1 → HDMI IN 2 → PC IN (default, high to low priority) Different priority cycles can be specified using the Video & Audio Settings Web page
On (down)	Off (up)	Manual
On (down)	On (down)	Manual



Audio Switching Selection

DIP-switch 3	DIP-switch 4	Audio Input Selection
Off (up)	Off (up)	Automatic—Priority selection. Embedded HDMI → analog Audio IN (high to low priority)
Off (up)	On (down)	Automatic—Priority selection. Analog Audio IN → embedded HDMI (high to low priority)
On (down)	Off (up)	Embedded HDMI
On (down)	On (down)	Analog Audio IN

Step 6: Connect the power

Connect the 12V DC power adapter to the **DIP-31M** and plug it into the mains electricity.

Safety Instructions



- Caution:** There are no operator serviceable parts inside the unit.
- Warning:** Use only the power cord that is supplied with the unit.
- Warning:** Do not open the unit. High voltages can cause electrical shock! Servicing by qualified personnel only.
- Warning:** Disconnect the power and unplug the unit from the wall before installing.

See www.KramerAV.com for updated safety information

Step 7: Operate the DIP-31M

To operate and control the **DIP-31M** use:

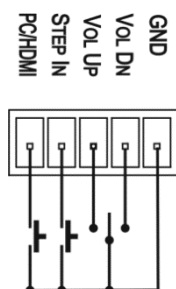
Front Panel

Buttons

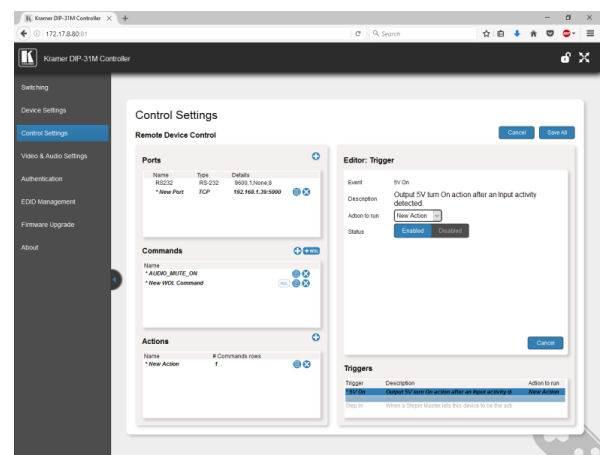
- HDMI IN 1 Select
- HDMI IN 2 Select
- PC IN Select
- STEP-IN

Remote Control Switches

PC/HDMI— input selection/VGA phase shift adjustment	Short press—Input toggle Long press—Adjusts the VGA phase shift)
STEP IN	Activates the step-in function if relevant
VOL UP— analog audio output volume increase control	Short press—Increases the volume one step Long press—Increases the volume from 0% to 100% in 10 seconds
VOL DN— analog audio output volume decrease control	Short press—Decreases the volume one step Long press—Decreases the volume from 100% to 0% in 10 seconds
GND	Connect to the common side of the switches



Web Pages from IP 192.168.1.39



Technical Specifications

Inputs	Video:	2 HDMI on HDMI connectors 1 VGA on a 15-pin HD (F) connector
	Audio:	1 Unbalanced stereo audio 1V RMS (nominal) on a 3.5mm mini jack
Outputs	Video:	1 HDMI on an HDMI connector
	Audio:	1 Unbalanced stereo audio 1V RMS (nominal) on a 3.5mm mini jack
Ports	1 Ethernet on an RJ-45 connector 1 RS-232 3-pin terminal block control port 1 RS-232 3-pin terminal block data port 1 USB on mini USB connector	
Controls	Remote switches for input switching, step-in, volume control, and device reset switch	
Standards	HDMI with Deep Color, x.v.Color™ and 3D HDCP 1.4 works with sources that support HDCP repeater mode	
Maximum Analog Audio Levels	3.1V p-p	
THD	0.013%	
SNR	75dB	
Power Consumption	12V DC, 600mA	
Operating Temperature	0° to +40°C (32° to 104°F)	
Storage Temperature	-40° to +70°C (-40° to 158°F)	
Humidity	10% to 90%, RHL non-condensing	
Cooling	Convection	
Enclosure Type	Aluminum	
Dimensions	18.75cm x 11.5cm x 2.54cm (7.38" x 4.53" x 1.0") W, D, H	
Weight	0.43kg (0.95lbs) approx.	
Shipping Dimensions	34.5cm x 16.5cm x 5.2cm (13.6" x 6.5" x 2.0") W, D, H	
Shipping Weight	1.03kg (2.3lbs) approx.	
Environmental Regulatory Compliance	Complies with appropriate requirements of RoHs and WEEE	
Included Accessories	Power adapter	
Warranty	7 years parts and labor	