



KRAMER ELECTRONICS LTD.

USER MANUAL

MODEL:

**Projection Curved Screen Blend Guide**

---



# **How to blend projection images on a curved screen using the Warp Generator**

version K-1.4



## Introduction

The guide describes how to blend two projection images accurately onto a curved screen using the Kramer Warp Generator PC application.

All the warp and blend models use the same process.

NOTE:

VP-794 has three modes:-

1. Projector, **the default mode is for Projection**

Projector mode for projection scaling, soft edge blending and picture warp

Menu>Output>Display Type>Display>Projector

To set up soft edge blending and warping refer to the two guides for blending on either a flat screen or a curved screen

2. LED, the default mode is for LED Videowalls

Menu>Output>Display Type>Display>LED

3. LCD mode for scaling only

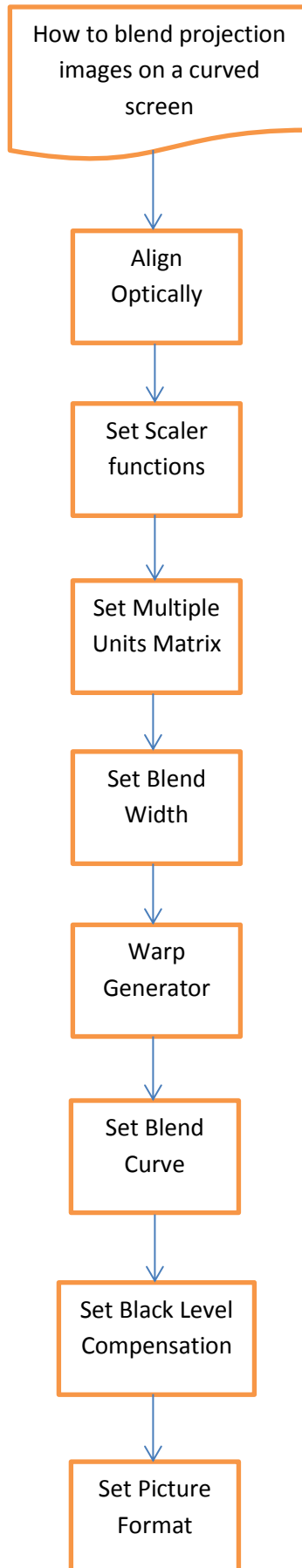
Menu>Output>Display Type>Display>LCD/Plasma

**To use this guide with a VP-794 it must be in Projector mode**

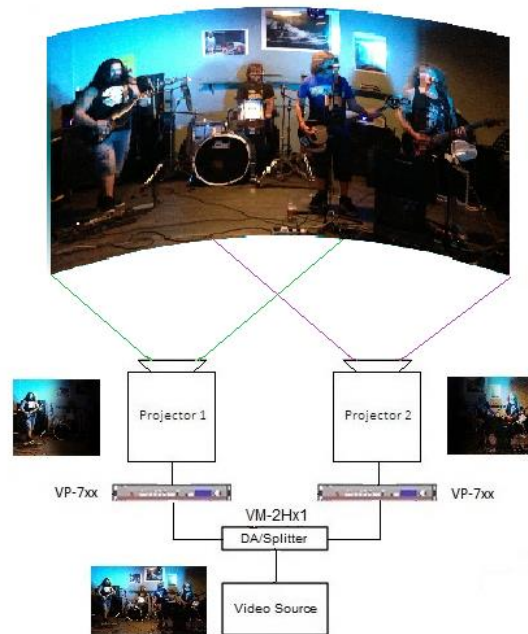
## Note about good blending

To successfully blend two or more projectors use matched projectors.

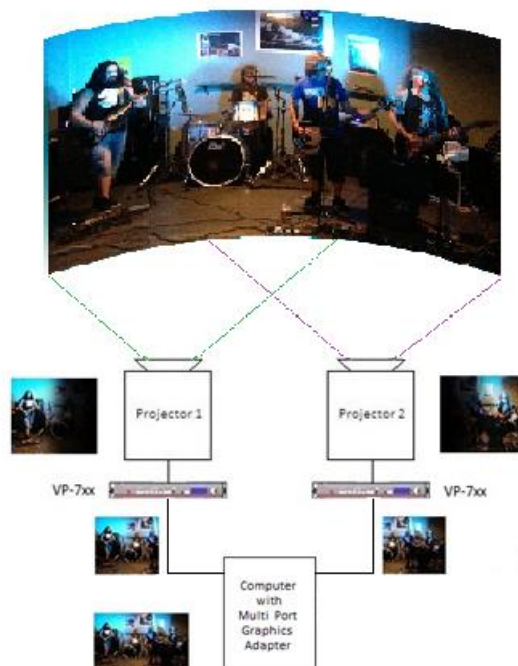
- a. The projectors should be the same make and model
- b. The lamps should be the same age
- c. DLP color wheels should be designed for video
- d. The 'dynamic gamma' and 'dynamic contrast' applications should be set to off



## Basic system



1. Use one processor for each projector.
2. Shown above, the one video source is distributed to both Kramer processors.



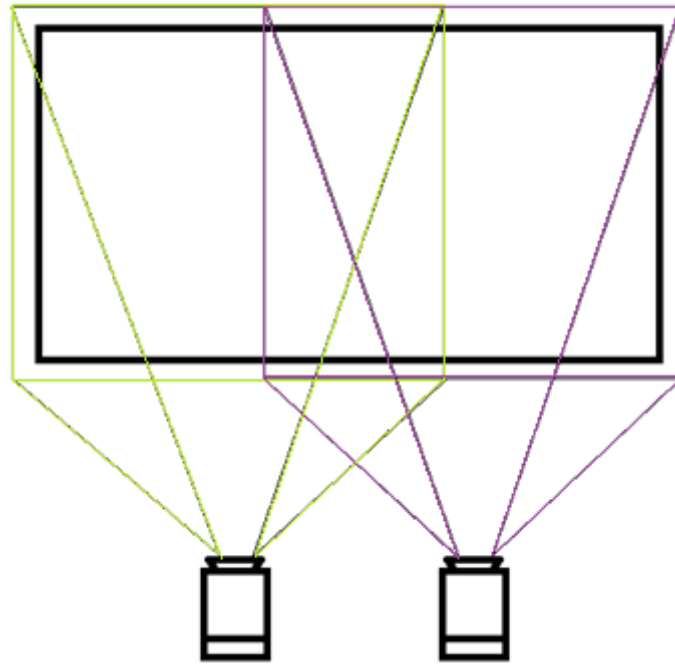
When using a multi-port graphics card in a computer [instead of a DA or splitter] note:-

1. Auto Zoom will be turned 'OFF'
2. The outputs on each port need to be configured to provide the section of picture relevant to that part of the projection

**AND**

3. The outputs on each port need to be configured to provide the overlapping parts of the picture that will be used to blend the picture segments together.

## Align optically



**Figure 1**

Figure 1 shows an example of two 4:3 projectors being used to project a single 16:9 image

The light projected needs to cover the whole of the screen area.

Align the position, zoom and focus of the projectors. Use the built-in test patterns in the Kramer processors.

## Set Scaler Functions

From the top menu select 'System' then select 'Menu Settings' then select 'Menu Display Time' and then select 'Infinite' to turn off the menu time-out

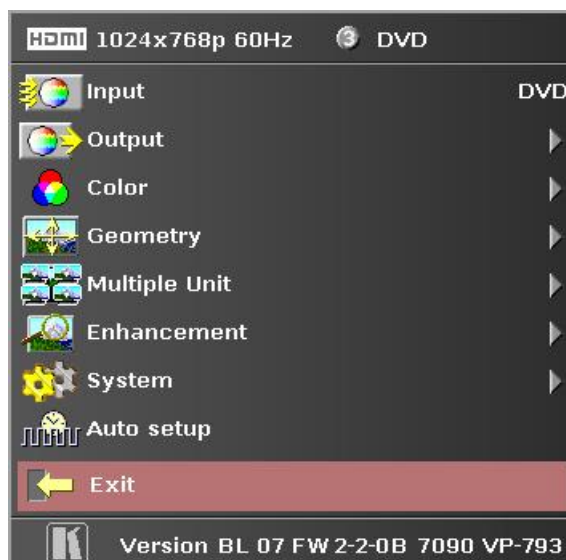
Set the output resolution to the native resolution of your projector.  
(It is important to let the Kramer processor do the scaling)

Set the I/O lock to source

Set the Frame rate to Auto

## Set Multiple Units Matrix

The following is for both Kramer processors in the system



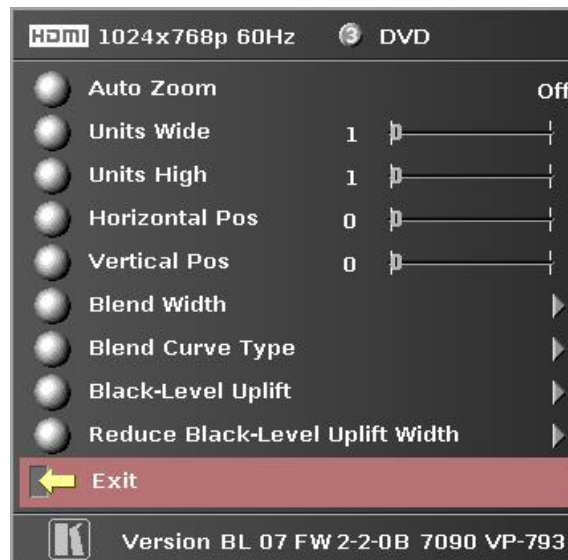
**Figure 2**

Figure two shows the menu system in the Kramer scaler.

1. In the top menu select 'Input' and then select 'test pattern' input
2. Then select horizontal grey bars test pattern by:-
  - a. Exit the menu system then use the up or down buttons to rotate around the available patterns  
or
  - b. In the top menu select 'System' then item 3 'Input Configuration' then item 4 'Test Pattern Setup' then select 'Test Pattern' and select 'Grey H Bars'.

## Set the position in the matrix

3. Tell each processor where it is in the system.
  - a. In the top menu (figure 2 above), select 'multiple unit'



**Figure 3**

Figure three shows the 'multiple Unit' menu.

- b. Set the system in a 2 x 1 matrix side by side horizontally:-  
Set 'units wide' to 2



**Figure 4**

Figure 4 shows the representation of two overlapping images on a screen.

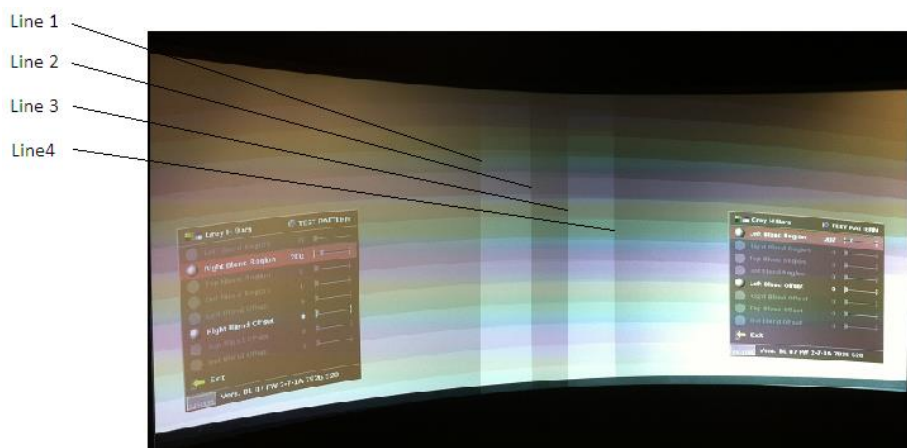
- c. Tell each processor which projector it is connected to:-  
Set horizontal position either 0 or 1 (0 for left hand projector and 1 for right hand projector)
      - d. Tell each processor to cut out the correct half of the picture and add the blend region:-  
Set 'Auto zoom' to ON



## Set Blend Width

In the 'multiple unit' menu

e. Choose 'Blend Curve Type' menu item and select 'Align Pattern' – this turns on the blend width alignment tool



**Figure 5**

Figure 5 shows two projections sided by side displaying the horizontal bar test pattern with blend width alignment tool

f. Choose 'Blend Width' menu item.

The default blend width is 200 pixels, adjust the number of pixels to equal the optical overlap. The alignment pattern is designed to make this task visible.

Do not adjust the blend offset, leave this set to 0.

The two vertical lighter stripes near the centre of the screen are the blend width alignment tool. This is a visible cursor which will move as the blend width is adjusted.

Line 1 is the left hand edge of the right hand projection

Line 2 is the right hand edge of the left projection blend region

Line 3 is the left hand edge of the right projection's blend region

Line 4 is the right hand edge of the left hand projection

Referring to Figure 4 above –

Adjust line 3 to meet line 1 and adjust line 2 to meet line 4

This adjusts the blend width of each projector so that the shadowed alignment area is equal to the optical overlap

Blend width adjusted



**Figure 6**

Figure 6 shows the left hand blend width correctly adjusted



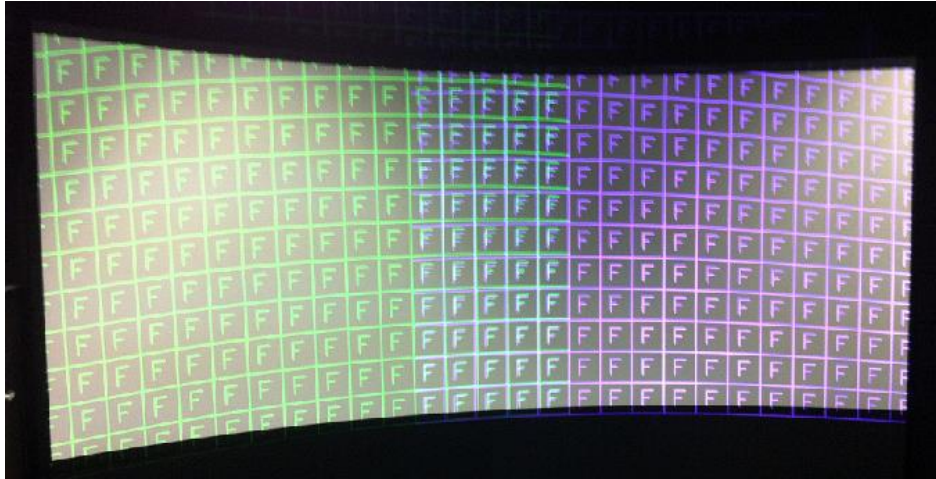
**Figure 7**

Figure 7 shows the view when the blend widths on both scalars are adjusted correctly.

**NB: It is important to set the number of blend width pixels to the same number for both processors, even if the lines in figure 7 do not quite align.**

- do not be concerned if the lines do not quite match the overlap for one projector this indicates that the optical zoom of the projectors is not matched, the blend will still work.

Now change the test pattern to the cross hatch (F) Warp pattern



Green or magenta color patterns give clear indication of which warp needs adjusting. The blend region is correctly over-laid when the result is white. Inaccurate adjustment can be clearly seen as a colored fringe around the white.

## Warp the projection image on to a curved screen

For curved screen and irregular shaped screens Kramer have a drag and drop 'Warp Generator PC program which calculates warp maps to be up-loaded to memories built in to the Kramer processor.

## Down-load and install the Warp Generator

Down load this application from our Web site [www.kramerelectronics.com](http://www.kramerelectronics.com)

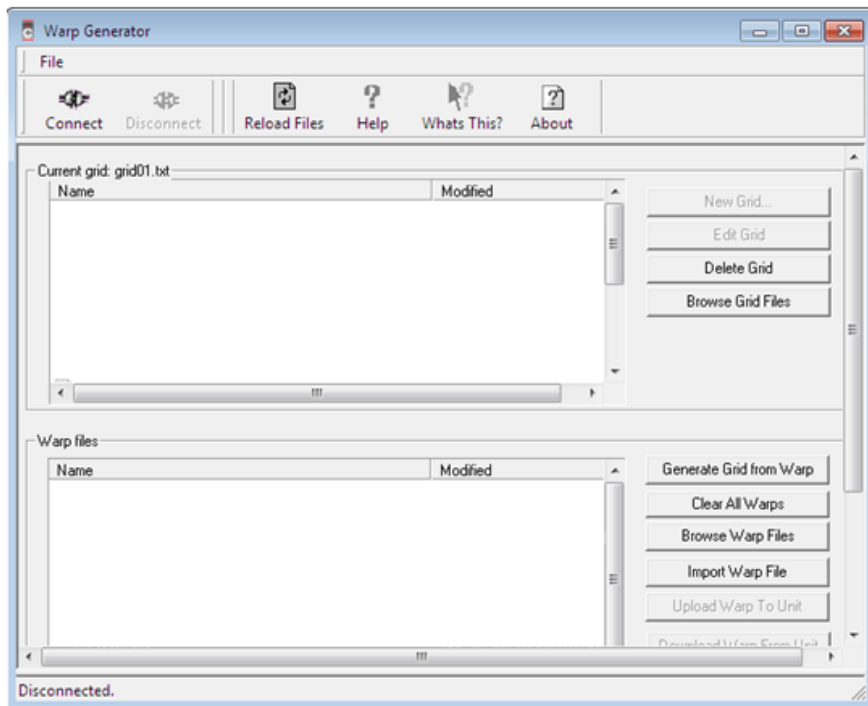
Before you install the warp generator on your PC check if you have .NET framework version 3.5 installed. This is needed to run the warp generator software. If is not installed on your PC you may also need to down load .NET framework version 3.5

<http://www.microsoft.com/en-us/download/details.aspx?id=21> and install this first.

Using a 'change over' cable for one processor at a time or both at once via an Ethernet switch or network. Connect your computer to the Kramer processors using the LAN connection.

# Open the Warp generator program

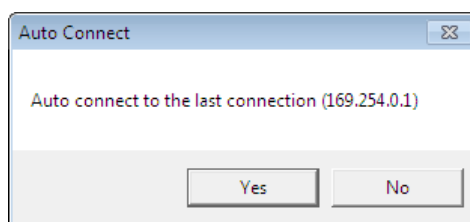
Start the Warp Generator and you will see the following screen



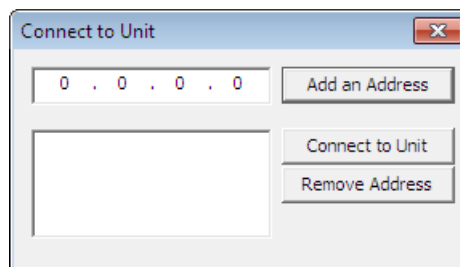
Warp Generator main interface screen

In the top left corner of the screen you will see the 'Connect' button. Click on this button and one of the following pop-ups will appear

This will appear if you have previously used the warp generator

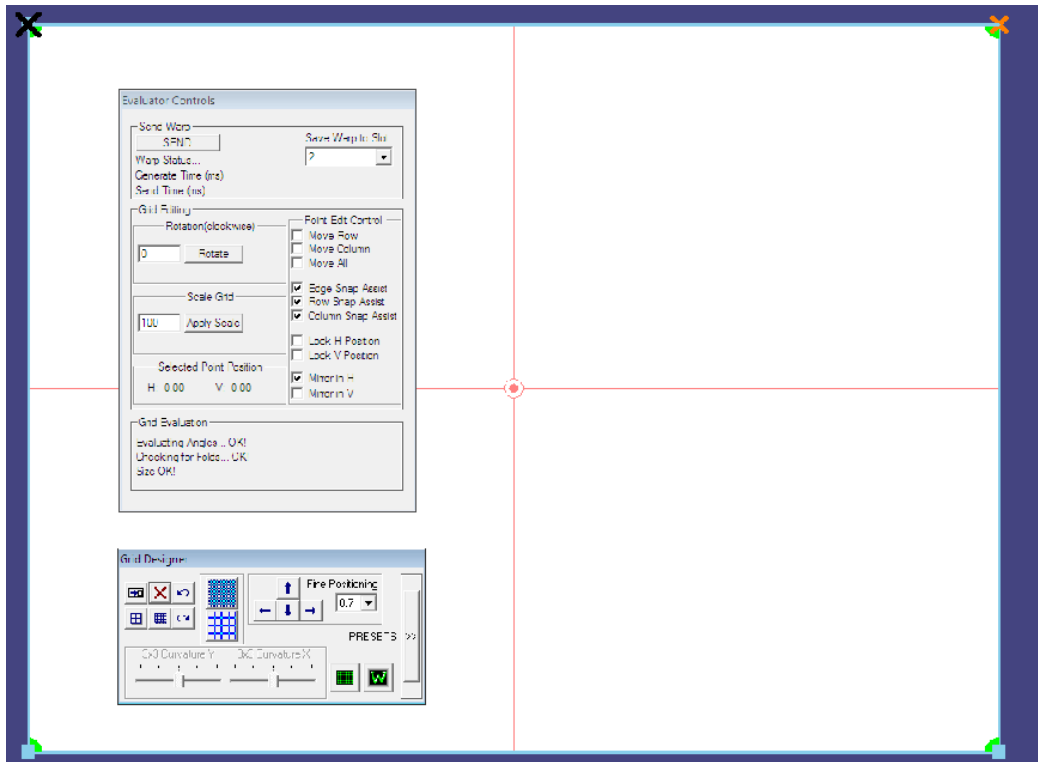


This will appear if it is the first you have used the program or if you say 'no' to the previous pop-up

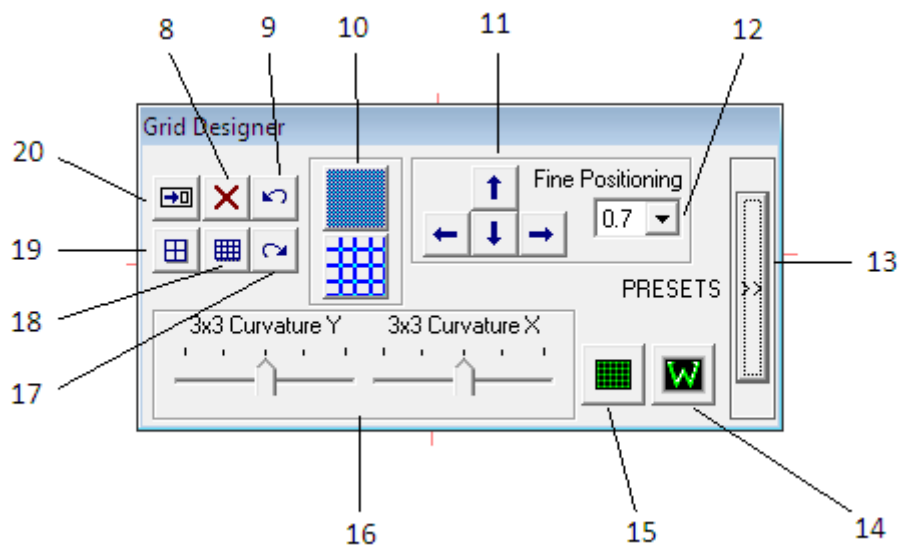
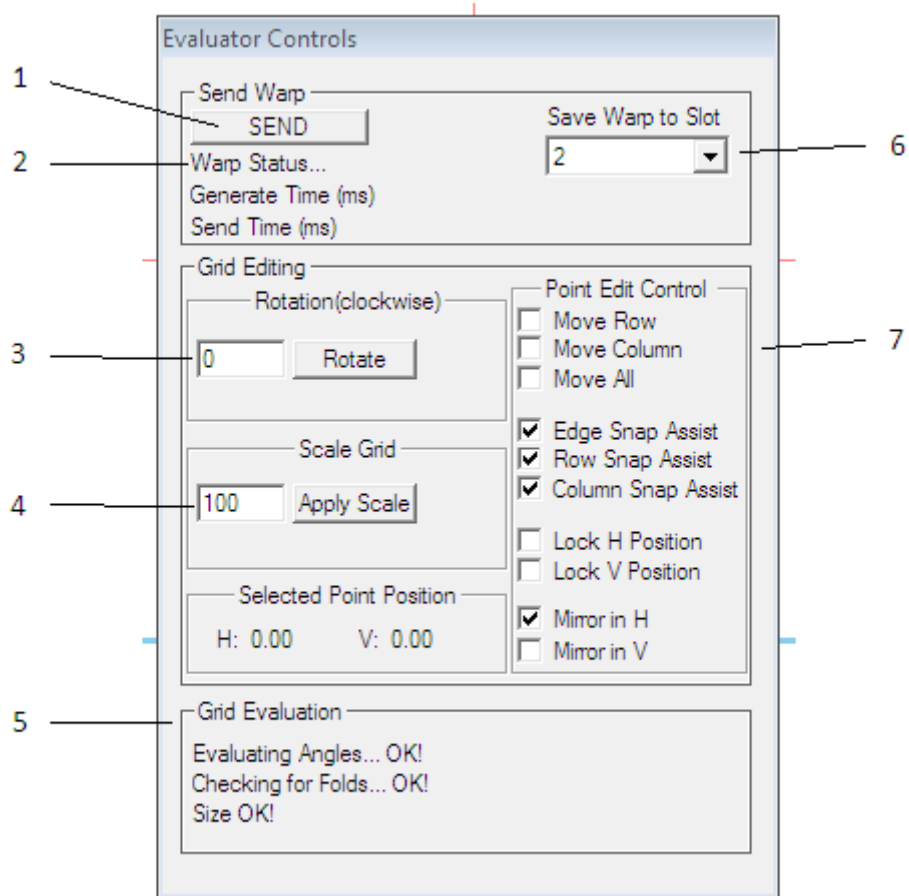


Enter the address of the processor you wish to connect to and click on 'Add an Address'  
The address will appear in the lower window  
Highlight the address in the lower window and click on 'Connect to Unit'

The following window will appear



To explain the functions of the panels see the following list :-

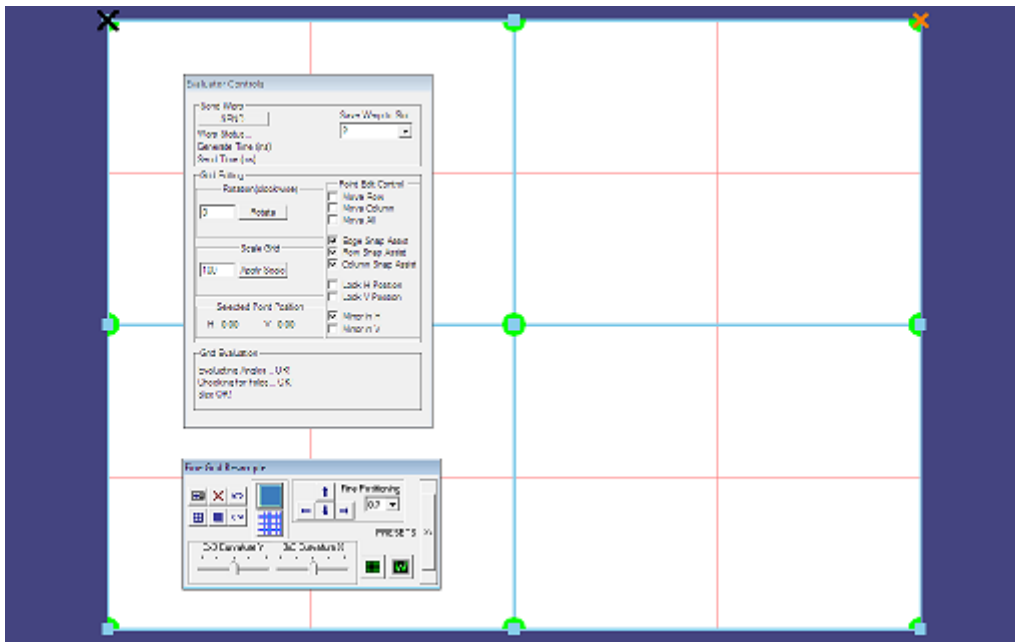




1. Press the 'Send' button to calculate the warp map and send it to the memory slot chosen in '5'
2. Progress of the warp up-load will be reported here
3. You can set a rotation of the image here, warp and rotation can be achieved simultaneously with this function. You can rotate +/- 180 degrees in one degree steps.
4. An overall magnification or overall reduction in size can be set here
5. Grid status check
6. The Kramer processors have 8 memories for warp maps, choose which memory slot you wish to address
7. You can choose to drag and drop individual points on the grid or here you can choose to move a whole horizontal line or whole vertical columns and other helpful combinations on the mesh
8. Choose this option to move whole vertical columns on the mesh
9. Do not save your changes and exit the warp generator
10. Undo last change
11. Increase or decrease the number of nodes on the mesh
12. Use the arrow keys or the ones on your computer keyboard to move a selected node by the amount specified in 12
13. Set the amount of pixels movement takes place when the arrow keys (11) are pressed
14. Access to additional preset settings
15. Turns the warp on and off to help you see your progress
16. Switches between warp test pattern and last selected video input
17. Applies an overall linear curve +ve or -ve in the horizontal X direction and in the vertical Y direction  
Use together for dome applications
18. Re-do last un-do (item 13)
19. Reset the position of all mesh nodes
20. Reset the position of the selected node

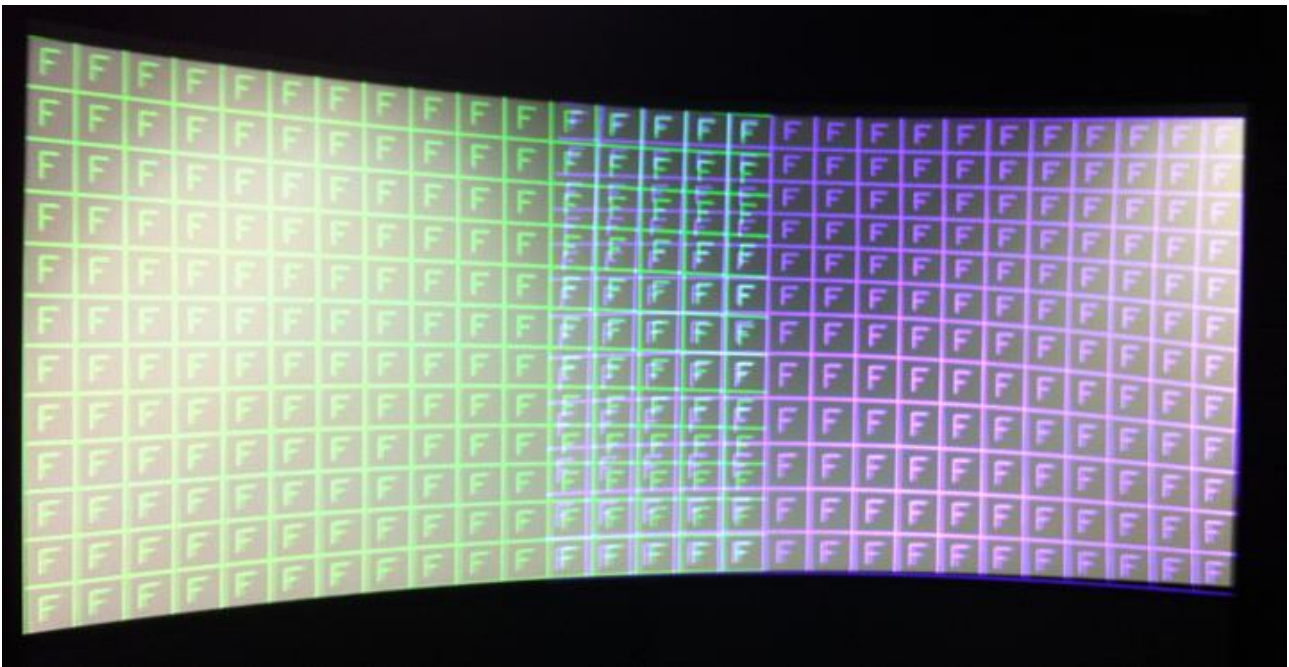
# Set the Warp using the Warp Generator

Use button 10. Increase or decrease the number of nodes on the mesh to start with the grid mesh with 9 points.



Click on the boxes in item 7 to turn off the 'mirror' adjust and the 'snap' options.

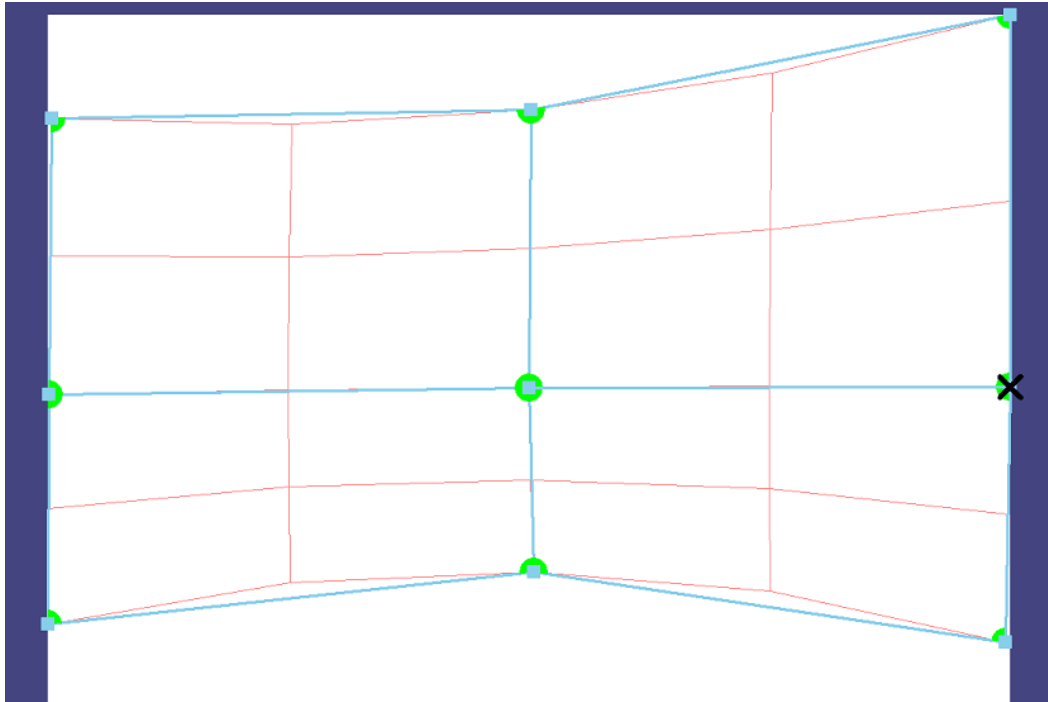
Adjust the position of the nodes with either the mouse or the arrow keys to positions you think will bring the test pattern correctly onto your screen. Press the SEND button (1) and wait for the result to be seen on the screen and the comment Warp Success to appear at (2).



Note that in the above example the size and shape of the squares are not even across the whole screen. The linearity needs adjustment.



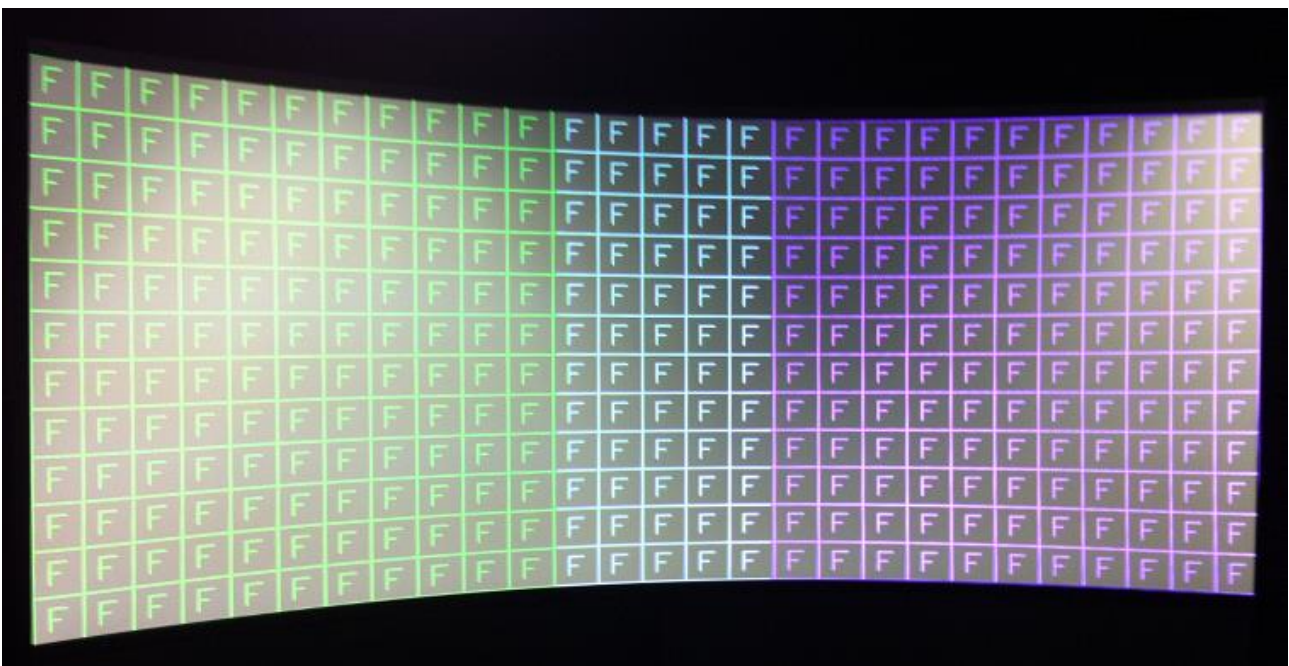
Linearity is achieved by adjusting the centre positions as indicated below. Note the relative sizes of the red rectangles, these should be equal sizes. If they are not equal as in the example below the linearity will be poor.



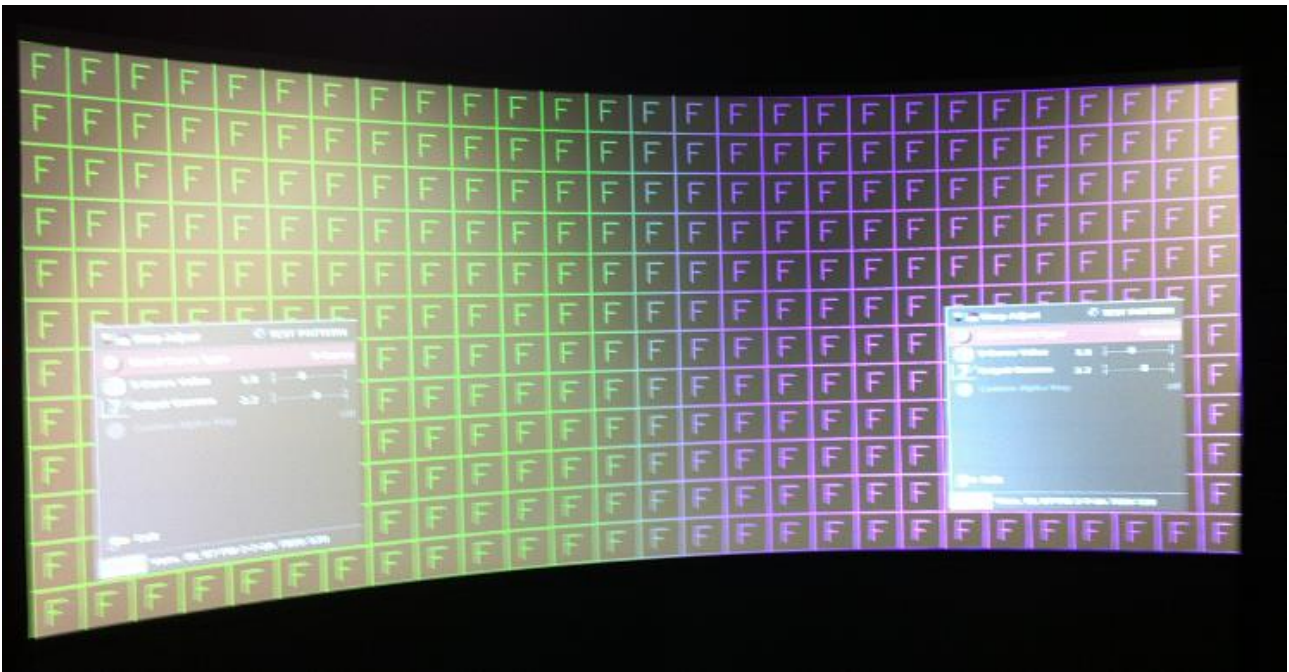
Continue adjustment looking to achieve an even size of test pattern squares across the whole screen and the over lapping area as closely aligned as possible

NB: when the Green and Magenta lines are correctly over-laid the color turns white.

Increase the number of nodes (14) to give more detailed adjustment only when you have made all the adjustments you can with the coarse setting.



In the Multiple Unit menu switch the Blend Curve Type to S Curve



Now select your video source then your picture format (see below)

## Set Picture Format



In main menu Geometry select Picture Format

Picture Format allows a user to select the displayed aspect ratio where the signal input is different to the display's natural aspect ratio.

Choose between Standard, Full Screen, Crop or Anamorphic

- a. **Standard** preserves the size and aspect ratio of the incoming image. Areas of the display that are unused are displayed black (letterboxed).
- b. **Full Screen** scales the image to the size of the display without preservation of the aspect ratio. Note: some signals have black borders which will be displayed as black.
- c. **Crop** preserves the aspect ratio of the image and scales the image to fill the screen. The smaller axis of the image will fill the space available. The result is that either the top and bottom or right and left areas of the image are cropped.
- d. **Anamorphic** scales the input image to display the whole picture in a 16:9 aspect ratio. Areas of the display that are unused are displayed black (letterboxed).

E&OE