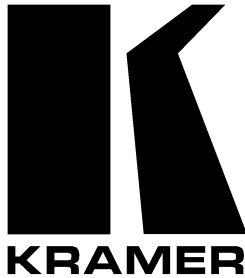


Kramer Electronics, Ltd.



**ETHERNET Configuration
(FC-11)
GUIDE**

Contents

1	Configuring the Ethernet Port	1
1.1	Setting a Virtual Port	3
1.2	Setting an Ethernet Connection	5

Figures

Figure 1:	The Ethernet Configuration Manager Window	2
Figure 2:	The Virtual Serial Port Manager Window	3
Figure 3:	The Virtual Serial Port Properties Window	4
Figure 4:	The Virtual Serial Port Properties Window (COM 3 and COM 4)	4
Figure 5:	The Port Window – Selecting a Virtual Serial Port	5
Figure 6:	The Port Window – Selecting a Remote Connection	5

Tables

Table 1:	Ethernet Configuration Manager Window Functionality	2
----------	---	---

1 Configuring the Ethernet Port

To configure the ETHERNET port, do the following:

1. Connect the ETHERNET port and configure the Ethernet card on your PC, as described in your user manual.
2. Insert the CD-ROM in the CD-ROM drive, double click the *Setfc11eth_confxx.exe*¹ file and follow the on-screen instructions². The Ethernet Configuration Manager is installed.
3. Click the appropriate shortcut in the Start menu's Programs folder. The Configuration Manager window (see Figure 1) opens.
4. Click the Search button³ (or the Action menu's, Search Board command). The MAC Address for the found ETHERNET port appears in the Device List.
5. Change the settings according to your network requirements and then click the Config button (or the Action menu's, Config command) to apply the settings.

Note that clicking the Config button will alter the IP settings of the ETHERNET port

1 File names are liable to change from time to time

2 The latest version appears on our Web site at <http://www.kramerelectronics.com>

3 To automatically search for devices

Configuring the Ethernet Port

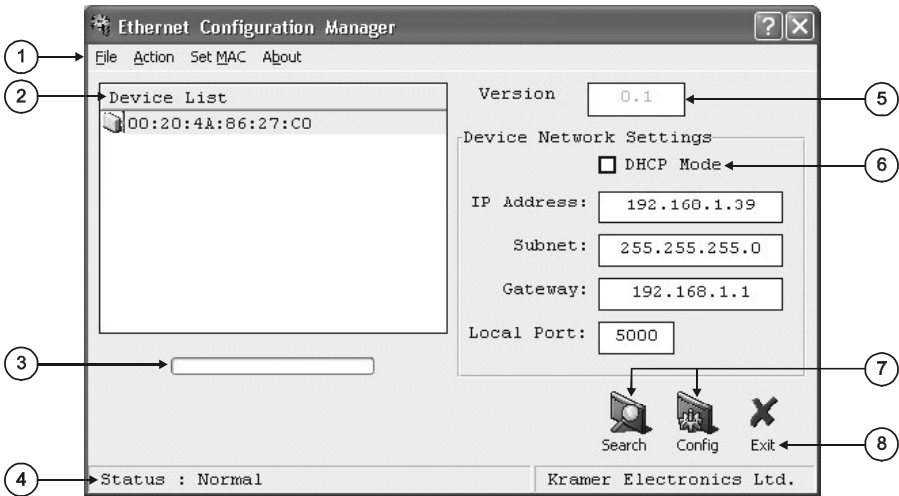


Figure 1: The Ethernet Configuration Manager Window

Table 1: Ethernet Configuration Manager Window Functionality

#	Feature	Function
1	File	The <i>Exit</i> command closes the Configuration Manager application
	Action	The <i>Search Board</i> command seeks the Kramer Machine device that connects to the PC via the ETHERNET port, and displays it and its corresponding settings; The <i>Config</i> command adjusts the Kramer Machine according to the displayed data
	Set MAC ¹	For factory use only (click the <i>Password</i> command to enter the password)
	About	Displays software information, including the software version
2	Device List	Displays the MAC Address
3	Progress Bar	Shows the progress
4	Status Bar	Shows the status
5	Version	Displays the firmware version
6	Device Network Settings Area	DHCP¹ Mode Check Box: When selected, configures the Ethernet port to obtain an IP address automatically from the DHCP server. When cleared, manual configuration of the Ethernet port is required to obtain an IP address (Static IP) IP Address: A 32-binary digit number obtained from your Network Administrator that identifies the Ethernet port that is currently being configured Subnet: A 32-binary digit number obtained from your Network Administrator, which combined with the IP Address, identifies which network your device is on Gateway: A network position serving as an entry to another network or to the Internet (only relevant in the Active Routing mode)
7	Action Buttons	Search: seeks the devices that connect to the PC via the ETHERNET port, and displays them and their corresponding settings Config: adjusts the according to the displayed data
8	Exit Button	Closes the Configuration Manager application

¹ Dynamic Host Configuration Protocol - Allows the network administrator to distribute IP addresses from a central point and automatically send a new IP address when an Ethernet point is plugged into a different network location

1.1 Setting a Virtual Port

If the control application cannot work with an Ethernet driver, use the Kramer Virtual port driver as follows:

1. Insert the CD-ROM in the CD-ROM drive, double click the *SetKVSP_xx.exe*¹ file and follow the on-screen instructions².
The virtual serial port is installed.
2. Run the Virtual Serial Port Manager Application.
The Virtual Serial Port Manager window appears (see Figure 2).

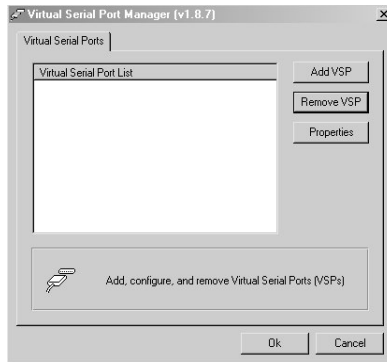


Figure 2: The Virtual Serial Port Manager Window

3. Press the **Add VSP** button to add a serial port and type the IP settings according to the IP address and local port of your **Kramer Machine**³ (see Figure 3).

¹ File names are liable to change from time to time

² The latest version appears on our Web site at <http://www.kramerelectronics.com>

³ The factory default IP address is 192.168.1.39 and the factory default local port is 5000

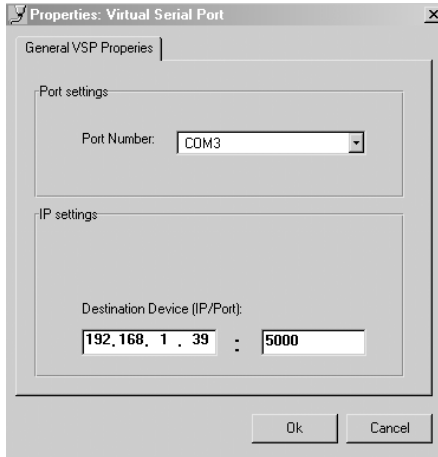


Figure 3: The Virtual Serial Port Properties Window

4. You can set a virtual port for each local port on your **Kramer Machine** (see Figure 4).

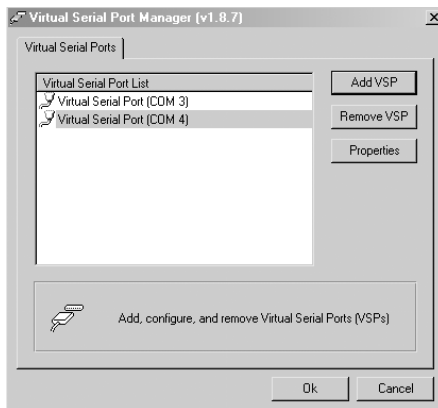


Figure 4: The Virtual Serial Port Properties Window (COM 3 and COM 4)

5. In the control application, choose the COM-port connection according to your virtual serial port connections (see Figure 5).

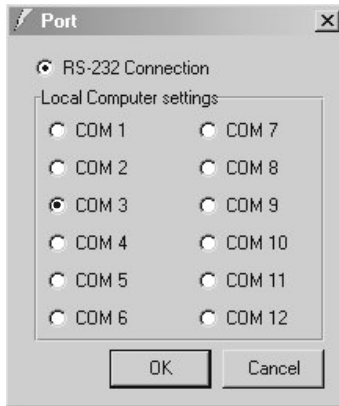


Figure 5: The Port Window – Selecting a Virtual Serial Port

1.2 Setting an Ethernet Connection

If the control application can directly connect to the Ethernet driver, select the host IP and port number, as illustrated in Figure 6.

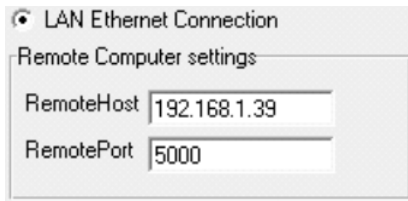


Figure 6: The Port Window – Selecting a Remote Connection